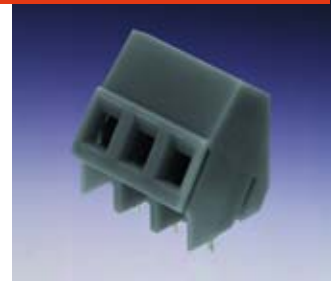


LM SERIES

- Gas-tight screw clamp termination
- Low-profile — designed for applications where space is at a premium
- Single-, double- and triple-level blocks for high density applications
- Available in 3.50, 5.00 and 5.08 mm pitch
- 90°, 135° and 180° wire orientation
- Wire size range: 26...12 AWG
- 300 V, 10 A UL rating
- Available in 2- and 3-pole versions which can be dovetailed together
- Double- and triple-level blocks are footprint compatible with LP (screw clamp) and LMZF (tension clamp) terminal block series for added flexibility



■ Screw Clamp

Poles	Description	Color	Part No.	Poles	Description	Color	Part No.
2	LM 3.5/2/90	BK	1699670000	3	LM 5.08/3/90	BK	1716030000
3	LM 3.5/3/90	BK	1699680000	2	LM 5.08/2/135	BK	1716060000
2	LM 3.5/2/135	BK	1715010000	3	LM 5.08/3/135	BK	1716070000
3	LM 3.5/3/135	BK	1715050000	2	LM 5.08/2/180	BK	1716040000
4	LM2N 3.5/4/90	BK	1720000000	3	LM 5.08/3/180	BK	1716050000
6	LM2N 3.5/6/90	BK	1720010000	4	LM2N 5.08/4/90	BK	1769080000
8	LM2N 3.5/8/90	BK	1720020000	6	LM2N 5.08/6/90	BK	1769090000
10	LM2N 3.5/10/90	BK	1720030000	8	LM2N 5.08/8/90	BK	1769100000
12	LM2N 3.5/12/90	BK	1720040000	10	LM2N 5.08/10/90	BK	1769110000
16	LM2N 3.5/16/90	BK	1720060000	12	LM2N 5.08/12/90	BK	1769120000
2	LM 5.00/2/90	BK	1715250000	16	LM2N 5.08/16/90	BK	1769140000
3	LM 5.00/3/90	BK	1715260000	6	LM3R 5.08/6/90	BK	1769930000
2	LM 5.00/2/135	BK	1715290000	9	LM3R 5.08/9/90	BK	1769940000
3	LM 5.00/3/135	BK	1715300000	12	LM3R 5.08/12/90	BK	1769950000
2	LM 5.00/2/180	BK	1715270000	15	LM3R 5.08/15/90	BK	1769960000
3	LM 5.00/3/180	BK	1715280000	18	LM3R 5.08/18/90	BK	1769970000
2	LM 5.08/2/90	BK	1716020000	24	LM3R 5.08/24/90	BK	1769990000

APPLICATION NOTE:
Ideal for high-density PCB applications

LMZF SERIES

- Tension clamp termination for reduced wiring time – no special tools needed
- Single-, double- and triple-level blocks for high density applications
- Available in 5.08 mm pitch
- Double- and triple-level blocks are footprint compatible with screw clamp versions for added flexibility
- 300 V, 10 A UL rating



■ Tension Clamp

Poles	Description	Color	Part No.	Poles	Description	Color	Part No.
2	LMZF 5.08/2/90	BK	1721640000	10	LM2NZF 5.08/10/135	OG	1764840000
3	LMZF 5.08/3/90	BK	1721650000	12	LM2NZF 5.08/12/135	OG	1764850000
2	LMZF 5.08/2/135	BK	1734220000	16	LM2NZF 5.08/16/135	OG	1764870000
3	LMZF 5.08/3/135	BK	1734230000	6	LM3RZF 5.08/6/135	OG	1764910000
2	LMZF 5.08/2/180	BK	1722400000	9	LM3RZF 5.08/9/135	OG	1764920000
3	LMZF 5.08/3/180	BK	1722410000	12	LM3RZF 5.08/12/135	OG	1764930000
4	LM2NZF 5.08/4/135	OG	1764810000	15	LM3RZF 5.08/15/135	OG	1764940000
6	LM2NZF 5.08/6/135	OG	1764820000	18	LM3RZF 5.08/18/135	OG	1764950000
8	LM2NZF 5.08/8/135	OG	1764830000	24	LM3RZF 5.08/24/135	OG	1764960000