

VJ/RVJ Series JIC/NEMA Rated Enclosures

Features

- VJ - Seven sizes ranging from inside dimensions of 6" x 6" to 18" x 16"
- RVJ - Five sizes ranging from inside dimensions of 10" x 8" to 18" x 16"
- Enclosures are maintenance free and corrosion resistant
- Bases and covers are hot compression molded from halogen free, self-extinguishing fiberglass reinforced polyester that can withstand continuous temperatures from -58°F up to 302°F
- Gaskets - polyurethane foam
- Molded on mounting flange
- VJ (flat cover) and RVJ (raised cover) enclosures are designed in accordance with the Joint Industrial Council (JIC) - USA

Standards

- IEC 439-1 • EN 50298
- IEC 529 - Rated IP66-11
- CSA Certified per C22.2 No. 94

Approvals

- UL Listed types: 3, 3R, 4, 4X, 12 & 13 per UL 508
- CSA Listed types: 3, 3R, 4, 4X, 12 & 13
- AS Listed types: 3131 - 1991
- CE Marking



Applications

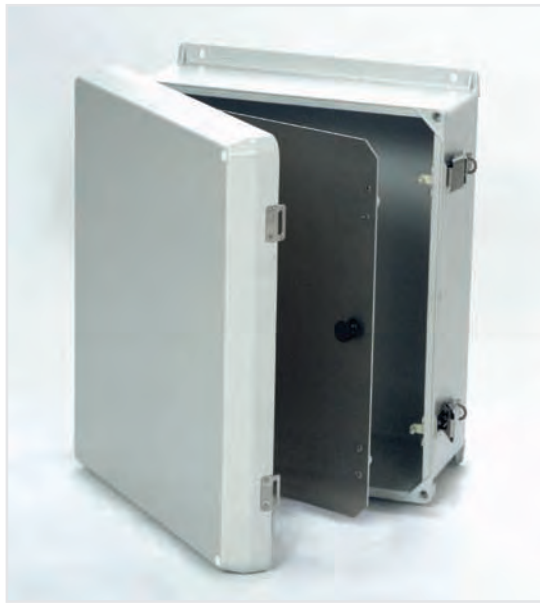
VJ and RVJ enclosures are designed for use as electrical junction boxes in highly corrosive environments. Examples include:

Chemical Processing Plants, Oil Refineries, Marine Installations, Waste Water Treatment Plants, Electroplating Plants, Food Processing Plants, and Agricultural Environments.

Enclosures are highly suitable as both indoor and outdoor instrument housings. Window enclosures provide easy visual inspection of interior components.

All enclosures can be modified to customer specifications!

Vynckier Enclosure Systems, Inc.



| Base Models | Inside Dimensions | | | Weight lb (kg) |
|-------------|-------------------|-------------|-------------|----------------|
| | H | W | D | |
| VJ606 (mm) | 6.00 (152) | 6.00 (152) | 4.10 (104) | 2.8 (1.27) |
| VJ806 (mm) | 8.00 (203) | 6.00 (152) | 4.10 (104) | 3.8 (1.72) |
| VJ1008 (mm) | 10.00 (254) | 8.00 (203) | 4.59 (1176) | 4.8 (2.17) |
| VJ1210 (mm) | 12.00 (305) | 10.00 (254) | 4.74 (120) | 6.3 (2.85) |
| VJ1412 (mm) | 14.00 (356) | 12.00 (305) | 5.74 (146) | 8.6 (3.90) |
| VJ1614 (mm) | 16.00 (406) | 14.00 (356) | 5.74 (146) | 10.6 (4.80) |
| VJ1816 (mm) | 18.00 (457) | 16.00 (406) | 8.62 (219) | 14.0 (6.34) |

| Base Models | Inside Dimensions | | | Weight lb (kg) |
|--------------|-------------------|-------------|-------------|----------------|
| | H | W | D | |
| RVJ1008 (mm) | 10.00 (254) | 8.00 (203) | 6.90 (157) | 4.9 (2.2) |
| RVJ1210 (mm) | 12.00 (305) | 10.00 (254) | 6.37 (162) | 6.5 (2.9) |
| RVJ1412 (mm) | 14.00 (356) | 12.00 (305) | 7.37 (187) | 8.8 (4.0) |
| RVJ1614 (mm) | 16.00 (406) | 14.00 (356) | 7.37 (187) | 10.8 (4.9) |
| RVJ1816 (mm) | 18.00 (457) | 16.00 (406) | 10.19 (259) | 14.3 (6.9) |



Options & Assessories

- Window Options
 - Bonded
 - Clear View
 - Gasketed
- Hinged Front Panels
- Hinge Options
- Latching Options
 - W • HW • HPLL • HWPL
- Vent Options
 - MEDV • Louver
- Enclosure Modifications
 - Silk screen • EMI/RFI Shielding

The "*Platinum Plus*" light grey color is cleaner, cooler and more aesthetically pleasing. Now users can enjoy the physical benefits of better heat reflection and better UV resistance, due to the lighter color.

Custom Colors are also available.