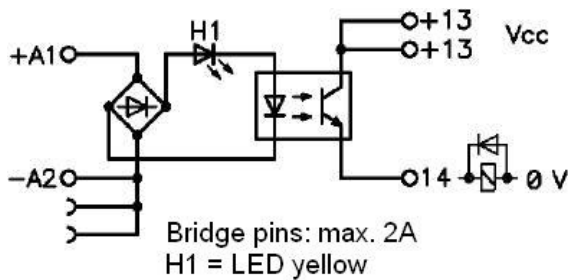


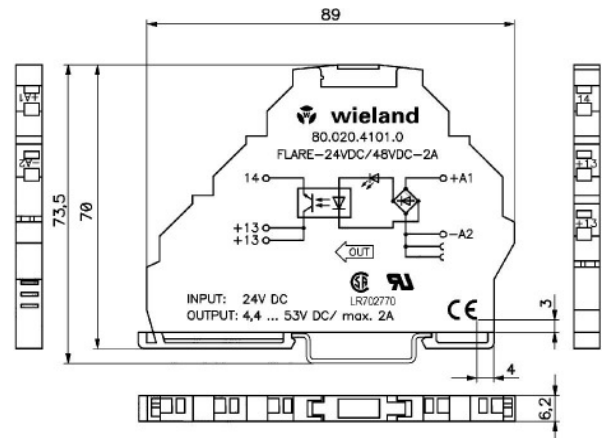
flare 24VDC/48VDC-2A

flare 24VDC/48VDC-2A
 Compact solid-state relay
 24 V DC
 80.020.4101.0

- Compact solid-state relay
- Input voltage range 0 ... 53 V DC
- Mounting width 6,2 mm



Wiring diagram



Dimensional diagram

Technical Data

flare 24VDC/48VDC-2A	Order no. 80.020.4101.0
Coil circuit	
Operating voltage	24 V DC
Minimum input voltage	0 ... 5 V DC
Maximum input voltage	10 ... 53 V DC
Nominal input current	4 ... 7 mA
Status display	LED yellow
Switching characteristics	
Nominal switching voltage	4,4 ... 53 V DC
Maximum switching voltage	53 V DC
Maximum switching current	2 A
DC1 30 / 110 / 220 V DC	
Min. switching voltage	4,4 V DC
Min. switching current	1 mA
Maximum switching frequency	5 Hz
Pick-up delay	1 ms
Release delay	5 ms
General Data	
Width	6,2 mm

**flare 24VDC/48VDC-2A**

Technical Data

flare 24VDC/48VDC-2A	Order no. 80.020.4101.0
Height	89 mm
Depth	70 mm
Isolation voltage of input/output	2,5 kV eff.
Ambient temperature	0 ... +50° C
Storage temperature	-40 ... +55° C
Degree of protection (IP)	IP20
Mounting rail	TS35 acc. EN 60715
Connection Data	
Connection type	Spring clamp terminals
Wire range fine-stranded min	0,25 mm ²
Wire range fine-stranded max	1,5 mm ²
Wire range solid min	0,25 mm ²
Wire range solid max	2,5 mm ²
Connectable via pluggable jumper	50
Approvals	
Conformity	CE-conformity
Approvals and Standards	UR, CSA