

# LGX Adapter Strips

### Description

Wirewerks™ LGX adapter strips with standard foot print and Keywerks™ LGX adapter strips with Keystone foot print permit to install or upgrade fiber optic distribution units quickly and easily. They can fit in premise and outside plant rack mount and wall mount patch panels. They are the interface interconnecting fiber optic assemblies together to active equipment. Keywerks LGX adapter strips present the advantage to allow for a quick change of adapter style or performance by simply snapping in the desired fiber optic Keystone module without having to secure them with screws. Wirewerks LGX adapter strips accommodate all standard connectors and can accommodate up to 24 fiber interconnections per strip. Finished in light texture black powder coated paint, they exhibit port numbering on the rear and front of the adapter strip. The adapters are color coded in accordance with their performance. Both Wirewerks and Keywerks LGX adapter strips snap easily into position by a robust pushpin mechanism. They are compatible with Wirewerks and Keywerks rack mount and wall mount patch panels and any other patch panel featuring standard LGX cut-outs.

### Features and Benefits

LGX adapter strips for standard or Keystone adapter foot print

Pushpin mechanism allows for quick and easy tool-less installation

Enable high density, flexibility, and scalability

Blank adapter strip available for to cover unoccupied cut-outs

Fiber capacity per adapter strip up to 24 fibers with LC quad adapter

Low insertion loss to minimize impact of loss budgets

Precise alignment for a reliable glass-to-glass contact

Manufactured with high performance component materials

Instruction manual included

### Applications

Data centers

Indoor or outdoor distribution units

Structured cabling systems

LAN intrabuilding and interbuilding installations

Community access television (CATV) & multi-system operator (MSO)

Central office and local loop



## Certification and Compliance

CEA/EIA-310-E  
ANSI/TIA-568-C.3  
TIA-604 series  
TIA-455 series  
IEC 60874-1  
IEC 61300 series

GR-326-CORE  
UL 94  
RoHS

Cabinets, Racks, Panels and Associated Equipment standard  
Optical Fiber Cabling Components Standard  
Fiber Optic Connector Intermateability Standard  
Standard Test Procedure for Fiber Optic Components  
Connecotrs for Optical Fibers and Cables – Generic Standard  
Fiber Optic Interconnecting Devices and Passive Components – Basic Test and Measurement Procedures  
Generic Requirements for Single Mode Optical Connectors and Jumper Assemblies  
Tests for Flammability of Plastic Material for Parts in Devices and Appliances  
Directive on Restriction of Hazardous Substances

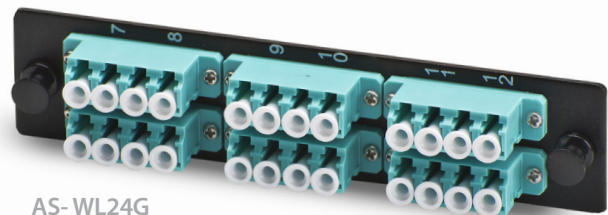
## Ordering Information

Part Number Builder					
<b>AS-A B CC D</b>					

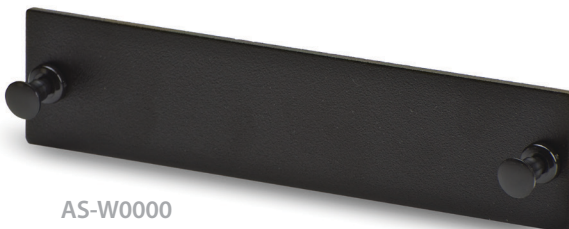
<b>A</b> Strip type	<b>W</b>					
	Type A, 5.10" x 1.15"					
<b>B</b> Connector type	<b>L</b>	<b>C</b>	<b>R</b>	<b>T</b>	<b>F</b>	<b>M</b>
	LC	SC	MTRJ	ST	FC	MPO
<b>CC</b> Fiber count	<b>06</b>	<b>12</b>	<b>24</b>	<b>96</b>		
	6 Fibers	12 Fibers	24 Fibers	96 Fibers		
<b>D</b> Fiber type Color of adaptor Sleeve material	<b>M</b>	<b>G</b>	<b>S</b>	<b>A</b>	<b>Leave D blank for MPO</b>	
	OM1/OM2 MM	OM3/OM4 MM	Single Mode, UPC	Single Mode, APC	Not Applicable	
	Beige	Aqua	Blue	Green	Black	
	Phosphorous Bronze	Zirconia Ceramic	Zirconia Ceramic	Zirconia Ceramic	Not Applicable	



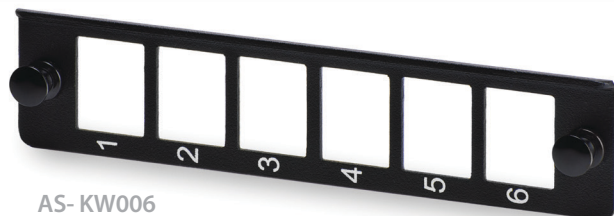
**AS-WM96**  
OM3/OM4 8 Port MPO (96 fibers)



**AS-WL24G**  
OM3/OM4 24 Port LC Adapter Strip



**AS-W0000**  
Blank Adapter Strip LGX



**AS-KW006**  
Keywerks™ Empty Adapter Strip, 6 Port

Physical Characteristics	Parameter		Value			
	Adapter strip material	Steel coated with black Sandex				
	Pushpin material	UL 94V-0 ABS high-impact thermoplastic				
	Overall dimensions	129.79 mm (5.11 in) x 28.95 mm (1.14 in)				
Mechanical Characteristics	Parameter		Value			
	Operating temperature	-40° C (-40° F) ~ 75° C (167° F)				
	Storage temperature	-40° C (-40° F) ~ 85° C (185° F)				
	Temperature cycling	-40° C (-40° F) ~ 75° C (167° F), 40 cycles = 0.2 dB change				
	High temperature	70° C for 96 hours = <0.4 dB change				
	Mating durability	500 mating cycles (cleaning every 25 matings) = <0.2dB change				
	Storage temperature	40° C (104° F) at 93% RH for 96 hours = <0.4 dB change				
Optical Performance	Parameter	Single Mode UPC	Single Mode APC	Multimode OM1	Multimode OM2	Multimode OM3
	Insertion Loss	0.2 dB Max.	0.2 dB Max.	0.3 dB Max.	0.3 dB Max.	0.3 dB Max.
	Return Loss	-55 dB	-65 dB	N/A	N/A	N/A