

DomiOP eBIS504

The eBIS504 compact 4,3" widescreen display completes the eBIS series with a no-compromise low-cost product. The built-in dual 100Mb Ethernet interfaces with switch functionality enhance its communication capability and make it the ideal choice for small systems.



- 4.3" TFT color display
- 480x272 pixel resolution, 64K colors
- Resistive touchscreen
- 2 Ethernet ports with switch function
- USB Host port
- SD Card slot
- Multistandard Serial Port
- Connection to bus systems using optional plug-in modules

Highlights

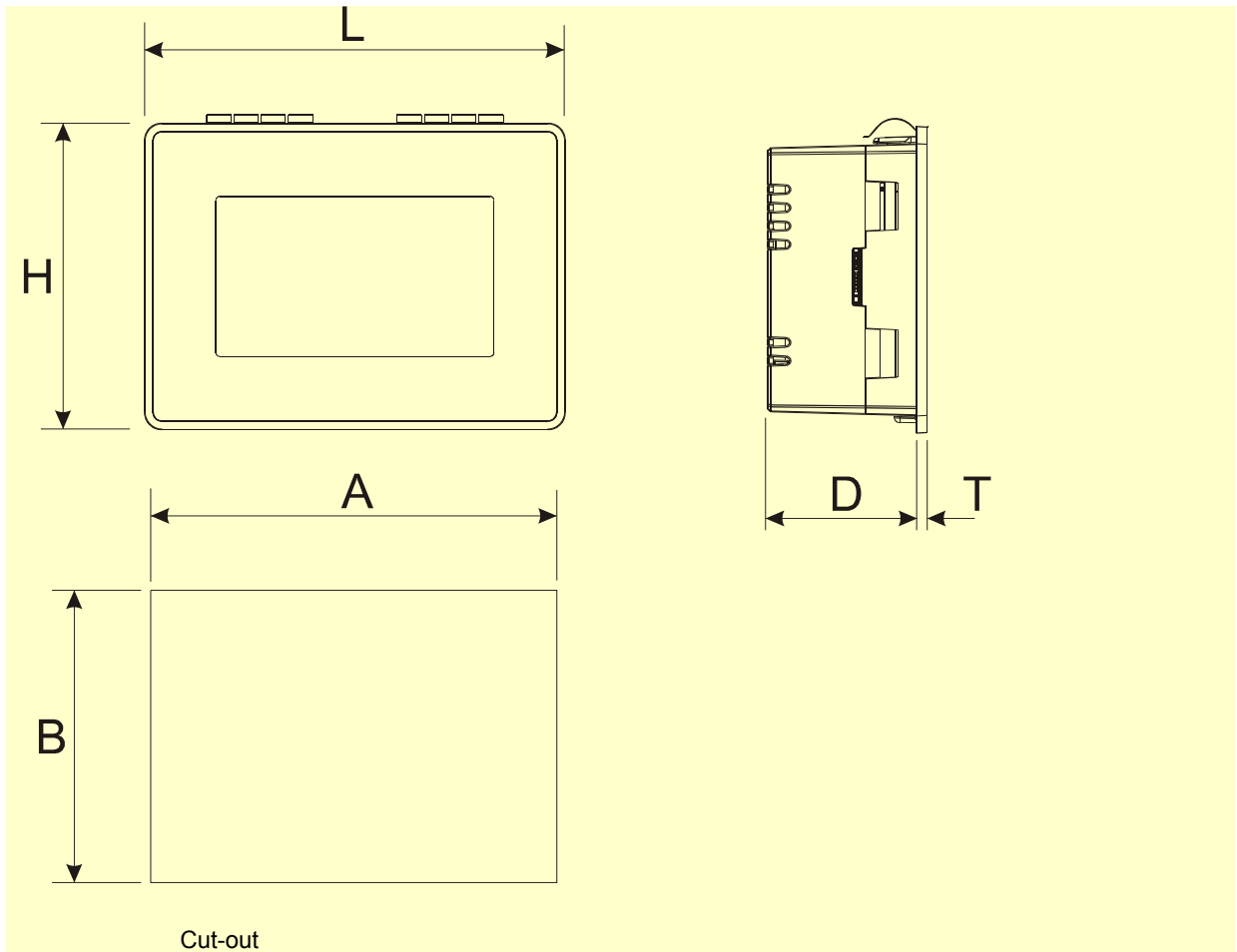
The eBIS HMI panels have been designed to run the JMobile software.

- JMobile runtime included. Full compatibility with JMobile Studio.
- Full vector graphic support. Native support of SVG graphic objects. Transparency and alpha blending.
- Full object dynamics: control visibility and transparency, move, resize, rotate any object on screen. Change properties of basic and complex objects.
- TrueType fonts
- Multilanguage applications. Easily create and manage your applications in multiple languages to meet global requirements. Far East languages are supported. Tools available in JMobile Studio support easy third-party translations and help reducing development and maintenance costs of the application
- Data display in numerical, text, bargraph, analog gauges and graphic image formats.
- Rich set of state-of-the-art HMI features: data acquisition, alarm handling, scheduler and timed actions (daily and weekly schedulers, exception dates), recipes, users and passwords, e-mail and RSS feeds, rotating menus
- Includes support for a wide range of communication drivers for Factory and Building Automation systems.
- Multiple drivers communication capability.
- Remote monitoring and control. Client-Server functionality. Mobile clients supported.
- Off-line simulation with JMobile Studio.
- Powerful scripting language for automating HMI applications. Script debugging improves efficiency in application development.
- Rich gallery of symbols and objects
- Project templates
- Optional plug-in modules for fieldbus systems, I/O and controllers.

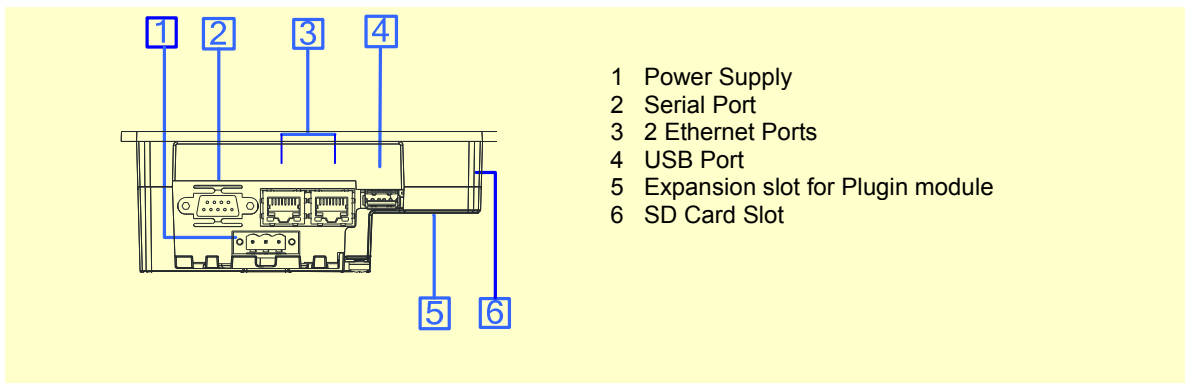
Technical Data

Display Type Resolution Active display area Colors Backlight Brightness Dimming	TFT 480x272 pixel 4.3" diagonal (95.4x53.9 mm) 64K LED 150 cd/m ² typ. Yes	Hardware Real Time Clock Screen saver Buzzer	Yes, with battery back-up Yes Yes, audible feedback for touchscreen
System Resources Operating System User memory RAM	Microsoft Windows CE 6.0 128 MB Flash 256MB DDR	Ratings Power supply voltage Current consumption Fuse Weight Battery	24 Vdc (18 to 30 Vdc) 0.4A at 24Vdc(max.) Automatic Approx 1.0 Kg Rechargeable Lithium battery, not user-replaceable
Operator Interface Touchscreen LED indicators	Analog resistive 1 (dual color)	Environmental Conditions Operating temperature Storage temperature Operating and storage humidity Protection class	5 to 40 °C (vertical installation) -20 to +70 °C 5 – 85 % relative humidity, non-condensing IP20
Interface Ethernet USB Serial Expansion Slot Memory Card	2 10/100 Mbit with integrated Switch 1 Host interfaces v.2.0 and v.1.1 RS-232, RS-485, RS-422, software configurable 1 Optional Plugin SD Card Slot	Dimensions Faceplate LxH Cutout AxB Depth D+T	147x107 mm (5.78x4.21") 136x96 mm (5.35x3.78") 56 + 4mm (2.40+0.16")
Functionality Vector graphics Object dynamics TrueType fonts Multiple driver communication Data acquisition and trend presentation Multilanguage Recipes Alarms Historical event list Users and passwords	Yes, includes SVG support Yes. Visibility, opacity, position, size, rotation for most object types. Yes Yes Yes. Flash memory storage Yes, with runtime language switching. Yes. Flash memory storage Yes Yes Yes	Approvals CE	EN 50090-2-2 + EN 50090-2-2/A1+EN 50090-2-2/A2 Immunity EN 61000-6-1, Emission EN 61000-6-3 for installation in residential environments

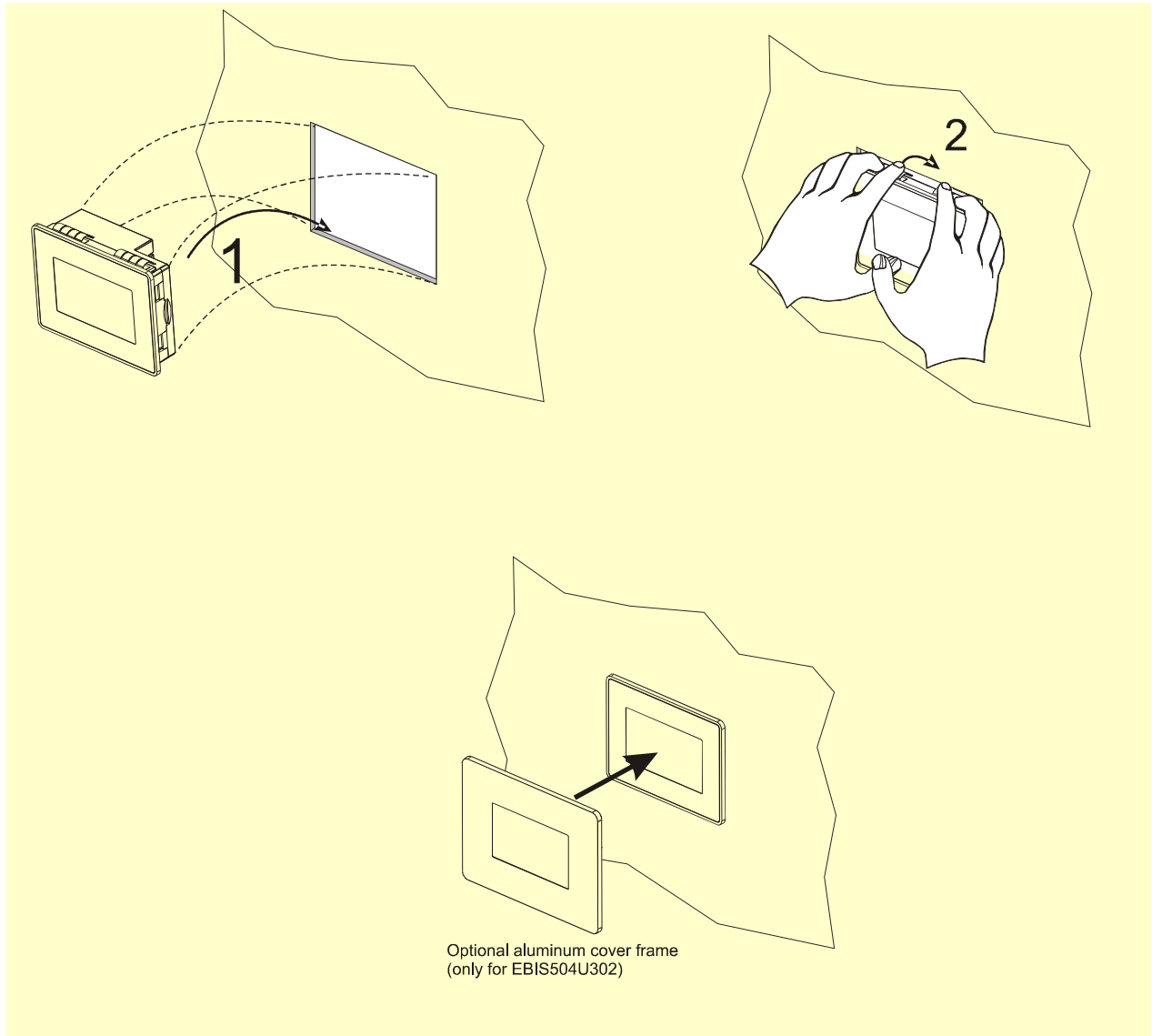
Dimensions



Connections



Mounting into Wall-mount Box



Ordering Information

Model-Type	Part Number	Description
eBIS504-White	EBIS504U101	4.3" TFT color touchscreen panel with Ethernet interface, White front panel. JMobile run-time.
eBIS504-Silver	EBIS504U201	4.3" TFT color touchscreen panel with Ethernet interface. JMobile run-time. Silver front panel.
eBIS504-Black	EBIS504U301	4.3" TFT color touchscreen panel with Ethernet interface. JMobile run-time. Black front panel.
eBIS504-Black with cover	EBIS504U302	4.3" TFT color touchscreen panel with Ethernet interface, JMobile run-time. Black front panel with additional cover.
COVER04-01	R-COVER015	Aluminum cover frame for eBIS504 – only for EBIS504U302
BOX504-01	R-BOX10	Wall mount box for eBIS504

ptn0375**Ver. 1.4****Copyright © 2011-2014 Exor International S.p.A. – Verona, Italy**

Subject to change without notice

The information contained in this document is provided for informational purposes only. While efforts were made to verify the accuracy of the information contained in this documentation, it is provided "as is" without warranty of any kind.

www.uniop.com

ptn0375-4.doc - 18.02.2014

DomiOP eBIS504