

Tamper Indicating Materials

www.BradyID.com



3" Core Tamper Indicating Materials:

B-438 Checkerboard Footprint Polyester Material

Color: Silver Finish: Matte

Metallized polyester label with matte finish. Leaves a checkerboard footprint on the surface when removed; the pattern also appears on the top of the label to prevent it from being reused. Applications include rating and serial plates or any other application where evidence of label removal is desired.

Performance Attributes:

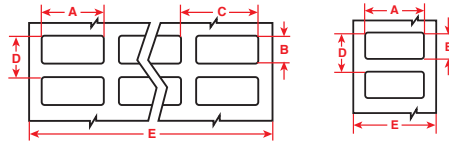


Figure 1

Figure 2

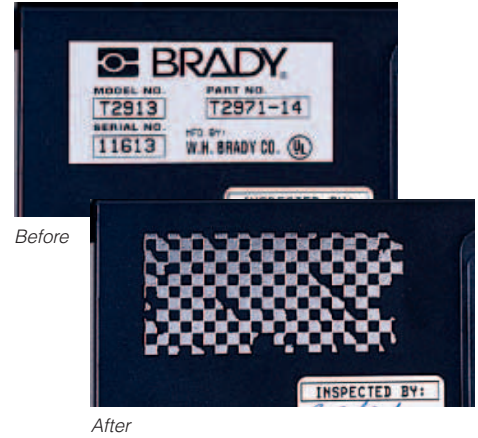


Diagram	Catalog #	Material	Color	Label Width A Inch (mm)	Label Height B Inch (mm)	Horiz. Repeat C Inch (mm)	Vert. Repeat D Inch (mm)	Web Width E Inch (mm)	Labels Per Row	Labels Per Pkg	Rec. Ribbon
Fig. 1	THT-12-438-10	Polyester	Silver	0.500 (12.7)	0.437 (11.1)	0.662 (16.8)	0.537 (13.6)	3.350 (85.1)	5	10,000	R4307
Fig. 1	THT-14-438-10	Polyester	Silver	0.650 (16.5)	0.200 (5.1)	0.700 (17.8)	0.300 (7.6)	2.950 (74.9)	4	10,000	R4300
Fig. 1	THT-1-438-10	Polyester	Silver	0.750 (19.1)	0.250 (6.4)	0.800 (20.3)	0.350 (8.9)	3.350 (85.1)	4	10,000	R4307
Fig. 1	THT-5-438-10	Polyester	Silver	1.000 (25.4)	0.500 (12.7)	1.075 (27.3)	0.600 (15.2)	3.350 (85.1)	3	10,000	R4307
Fig. 1	THT-37-438-10	Polyester	Silver	1.500 (38.1)	0.500 (12.7)	1.650 (41.9)	0.600 (15.2)	3.350 (85.1)	2	10,000	R4307
Fig. 1	THT-6-438-10	Polyester	Silver	1.500 (38.1)	0.750 (19.1)	1.650 (41.9)	0.875 (22.2)	3.350 (85.1)	2	10,000	R4307
Fig. 2	THT-17-438-3	Polyester	Silver	2.000 (50.8)	1.000 (25.4)	-	1.125 (28.6)	2.200 (55.9)	1	3,000	R4302
Fig. 2	THT-53-438-3	Polyester	Silver	2.000 (50.8)	0.500 (12.7)	-	0.600 (15.2)	2.200 (55.9)	1	3,000	R4302
Fig. 2	THT-7-438-3	Polyester	Silver	2.750 (69.9)	1.250 (31.8)	-	1.375 (34.9)	2.950 (74.9)	1	3,000	R4300
Fig. 2	THT-18-438-3	Polyester	Silver	3.000 (76.2)	1.000 (25.4)	-	1.125 (28.6)	3.200 (81.3)	1	3,000	R4300
Fig. 2	THT-19-438-1	Polyester	Silver	3.000 (76.2)	2.000 (50.8)	-	2.125 (54.0)	3.200 (81.3)	1	1,000	R4300
Fig. 3	THT-21-438	Polyester	Silver	3.000 (76.2)	300 ft. (91.4 m)	-	300 ft. (91.4 m)	3.200 (81.3)	1	1 Roll Cont.	R4300



3" Core Tamper Indicating Materials:

B-7546 VOID Footprint Polyester Material

Color: White Finish: Gloss

White polyester tamper-indicating material with glossy finish. Leaves a "VOID" footprint when label is removed to prevent it from being reused. The adhesive does not allow for repositioning and requires minimal handling in order to prevent a premature "VOID" pattern.

Performance Attributes:

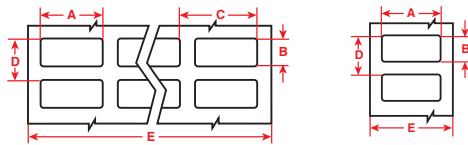


Figure 1

Figure 2



Diagram	Catalog #	Material	Color	Label Width A Inch (mm)	Label Height B Inch (mm)	Horiz. Repeat C Inch (mm)	Vert. Repeat D Inch (mm)	Web Width E Inch (mm)	Labels Per Row	Labels Per Pkg	Rec. Ribbon
Fig. 1	THT-5-7546-10	Polyester	White	1.000 (25.4)	0.500 (12.7)	1.075 (27.3)	0.600 (15.2)	3.350 (85.1)	3	10,000	R6007
Fig. 2	THT-59-7546-10	Polyester	White	1.000 (25.4)	0.500 (12.7)	-	0.600 (15.2)	1.200 (30.5)	1	10,000	R6006
Fig. 1	THT-37-7546-10	Polyester	White	1.500 (38.1)	0.500 (12.7)	1.650 (41.9)	0.600 (15.2)	3.350 (85.1)	2	10,000	R6007
Fig. 1	THT-6-7546-10	Polyester	White	1.500 (38.1)	0.750 (19.1)	1.650 (41.9)	0.875 (22.2)	3.350 (85.1)	2	10,000	R6007
Fig. 2	THT-17-7546-3	Polyester	White	2.000 (50.8)	1.000 (25.4)	-	1.125 (28.6)	2.200 (55.9)	1	3,000	R6000
Fig. 2	THT-53-7546-3	Polyester	White	2.000 (50.8)	0.500 (12.7)	-	0.600 (15.2)	2.200 (55.9)	1	3,000	R6000
Fig. 2	THT-7-7546-3	Polyester	White	2.750 (69.9)	1.250 (31.8)	-	1.375 (34.9)	2.950 (74.9)	1	3,000	R6002
Fig. 2	THT-18-7546-3	Polyester	White	3.000 (76.2)	1.000 (25.4)	-	1.125 (28.6)	3.200 (81.3)	1	3,000	R6002
Fig. 2	THT-19-7546-1	Polyester	White	3.000 (76.2)	2.000 (50.8)	-	2.125 (54.0)	3.200 (81.3)	1	1,000	R6002