

# 08

## BLAST Series

# HAVE A BLAST!

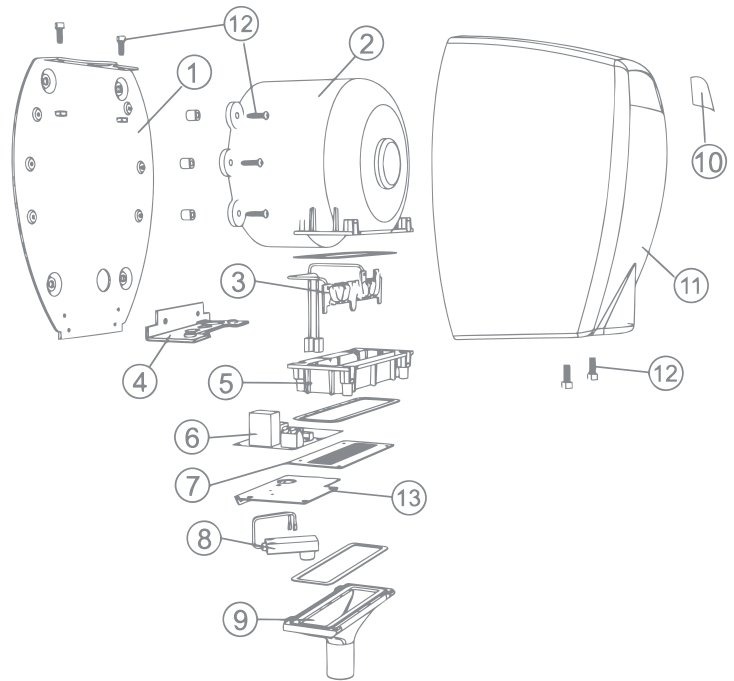
REINFORCED STEEL CONSTRUCTION FOR A COMPACT AND MODERN DESIGN WITH UNSURPASSED DRYING SPEED FOR A LONG LASTING DURABILITY. ENVIRONMENTALLY FRIENDLY, USING LESS THAN 1/6<sup>th</sup> OF THE ENERGY OF A CONVENTIONAL HAND DRYER

## FEATURES

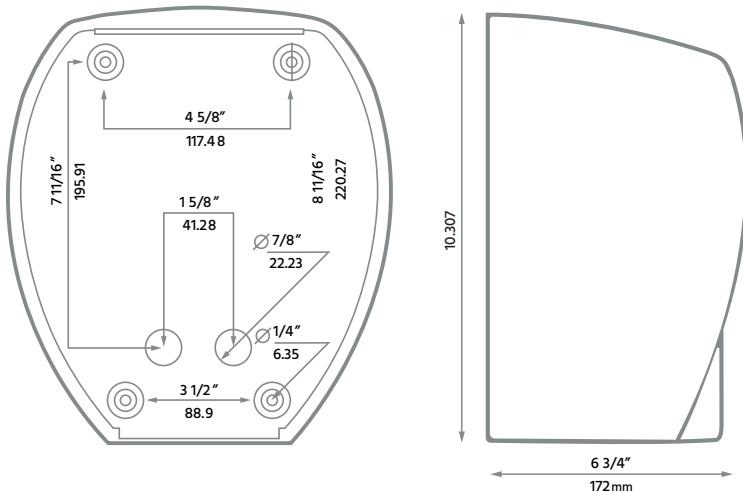
- Vandal proof-not scratchable with any sharp object
- Fastest drying time on the market
- Automatic infrared actuated sensor, for power conservation and maximum hygiene
- Robust, tamperproof design and construction for greater product durability and longevity in application
- High velocity (100 CFM) airflow for ultra high speed hand drying
- Universal voltage: automatic voltage switching for an easier installation
- Contributes to LEED and BOMA building certifications
- Designed for easy installation
- Smallest footprint on the market
- Tamperproof screws

## APPLICATIONS

- Washrooms and clean up areas, commercial facilities, factories, restaurants and hospitals schools, pools, gyms.
- Made for high traffic public areas



## DIMENSIONS



## REPLACEMENT PARTS

1	Baseplate	8	Sensor
2	Motor Assembly	9	Nozzle
3	Heating Elements	10	Nameplate
4	Inlet Grill (cast cover)	11	Cover
5	Element housing	12	Fasteners
6	Circuit Board	13	Sensor Mounting Plate
7	Outlet Grill Bracket	14	Tamper-Proof Key



White



Black



Stainless Steel



Chrome

## SPECIFICATIONS

**Voltage** Universal 115-230\*VAC (\*50/60Hz)  
**Wattage** 1450 W at 5.2A (230VAC)  
**Motor** Vacuum Motor, 36,000 RPM (outside the enclosure)  
 5/8HP 20,000 RPM (installed in the enclosure)  
**Colour** White, Black and Gray  
**Finish** Porcelain enamel.  
**Heating Element** 725w resistance coil.  
**Construction Material** Reinforced Steel

**Controls & Wiring** Automatic resetting thermostat with cutout when airflow is restricted. Infrared sensor cutout two seconds after hand removal, and 85 seconds after initiating drying.  
**Installation** Removable predrilled baseplate for easy mounting.  
**Warranty** 10 years parts.  
 CSA certified for use in Canada and the U.S. CE approved for use where applicable.  
**Patent Pending**

## ORDERING GUIDE

Model No.	Colour	Watts	Volts Hz	Air Velocity LFM	Air Volume CFM	Noise dB	Dimensions (W x H x D) (mm/in.)	Weight (kg/lbs.)
C-200000000	White	1450	115-230,50-60	19,000	100	78	235 x 280 x 170 (9.25 x 11.02 x 6.69)	5/11
C-200240000	Black	1450	115-230, 50-60	19,000	100	78	235 x 280 x 170 (9.25 x 11.02 x 6.69)	5/11
C-200220000	Brushed stainless steel	1450	115-230, 50-60	19,000	100	78	235 x 280 x 170 (9.25 x 11.02 x 6.69)	5/11
C-200230000	Chrome	1450	115-230, 50-60	19,000	100	78	235 x 280 x 170 (9.25 x 11.02 x 6.69)	5/11



COMMERCIAL HAND DRYERS TO ORDER PLEASE CALL 1-855-550-0303

comaccorporation.com



# 10

## ONE Series

# FEEL THE SILENCE

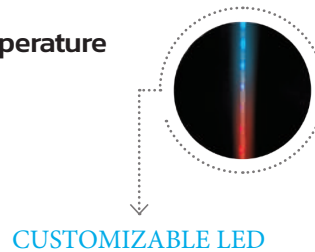
THE WORLD'S FIRST MODULAR DRYER - OUR FAMOUS QUIET MODEL "ONE" WITH NEW DESIGN AND TECHNOLOGY- FEEL THE SAME SILENCE

## FEATURES

- Quietest hand dryer in the industry at 65 db. Now, 12 seconds drying time
- Automatic infrared actuated sensor, for power conservation and maximum hygiene
- Robust, tamperproof design and construction for greater product durability and longevity in application
- **Exclusive : Adjustable output airflow temperature**
- High improved velocity (8600 LFM) airflow for faster hand drying
- Universal voltage
- Modular design for easy repair
- Designed for easy installation
- **Dynamic changeable LED colored lighting (by end user)**
- Vandal proof
- Tamperproof screws

## APPLICATIONS

- Washrooms | Clean up Areas
- Commercial Facilities, Factories, Restaurants, Hospitals, Office buildings
- Residential

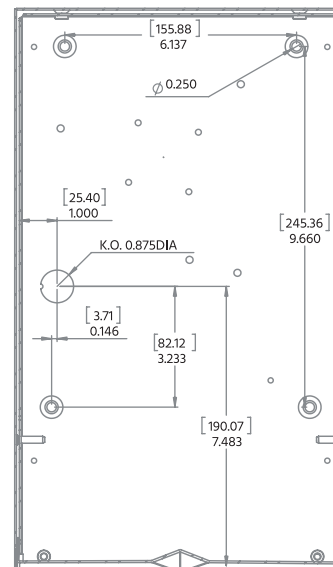


CUSTOMIZABLE LED

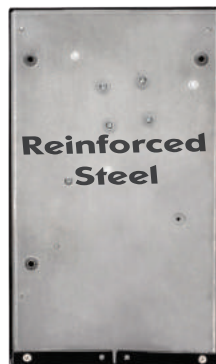
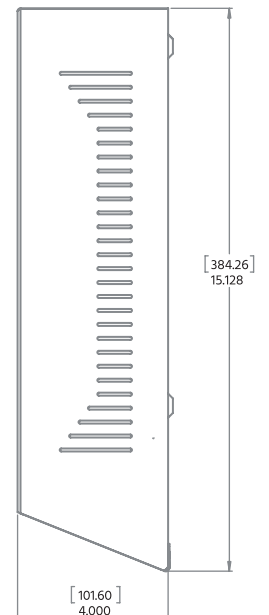


## DIMENSIONS

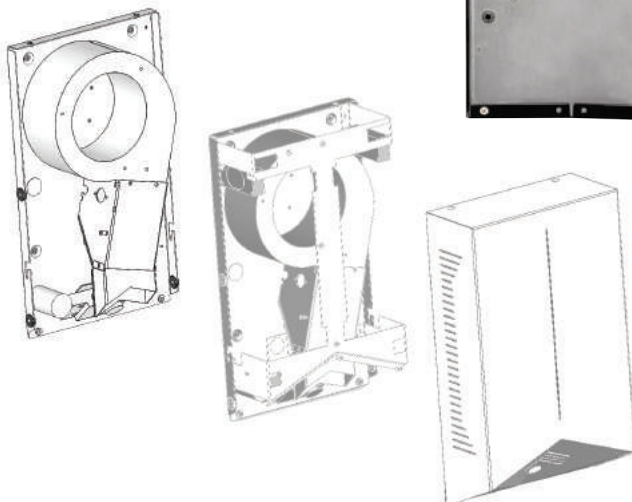
### BACK VIEW

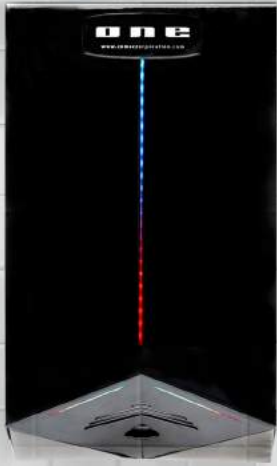


### SIDE VIEW



Reinforced  
Steel





White



Black



Stainless Steel



Chrome

## SPECIFICATIONS

**Voltage** Universal 115-230\*VAC (\*50/60Hz)  
**Wattage** 1450 W at 5.7A (230VAC)  
**Motor** 1800 RPM brushless external rotor  
**Colour** White, Black and Stainless steel  
**Finish** Chrome, scratch-resistant porcelain, brushed stainless steel  
**Heating Element** 1380w resistance coil  
**Construction Material** Reinforced Steel

**Controls & Wiring** Automatic resetting thermostat with cutout when airflow is restricted-Infrared sensor cutout two seconds after hand removal, and 60 seconds after initiating drying  
**Installation** Removable predrilled baseplate for easy mounting  
**Warranty** 10 years parts.  
 CSA certified for use in Canada and the U.S.  
 CE approved for use where applicable.  
**Patent Pending**

## ORDERING GUIDE

Model No.	Colour	Watts	Volts Hz	Air Velocity LFM	Air Volume CFM	Noise dB	Dimensions (W x H x D) (mm/in.)	Weight (kg/lbs.)
C-100000000	White	1450	115-230,50-60	8600	150	65	223 x 384 x 105 ( 8.77 x 15.11 x 4.13 )	5.7/12.5
C-100000002	Black	1450	115-230, 50-60	8600	150	65	223 x 384 x 105 ( 8.77 x 15.11 x 4.13 )	5.7/12.5
C-100220004	Brushed stainless steel	1450	115-230, 50-60	8600	150	65	223 x 384 x 105 ( 8.77 x 15.11 x 4.13 )	5.7/12.5
C-100220006	Chrome	1450	115-230, 50-60	8600	150	65	223 x 384 x 105 ( 8.77 x 15.11 x 4.13 )	5.7/12.5



COMMERCIAL HAND DRYERS TO ORDER PLEASE CALL 1-855-550-0303

