

# DUAL FLOW by COMAC



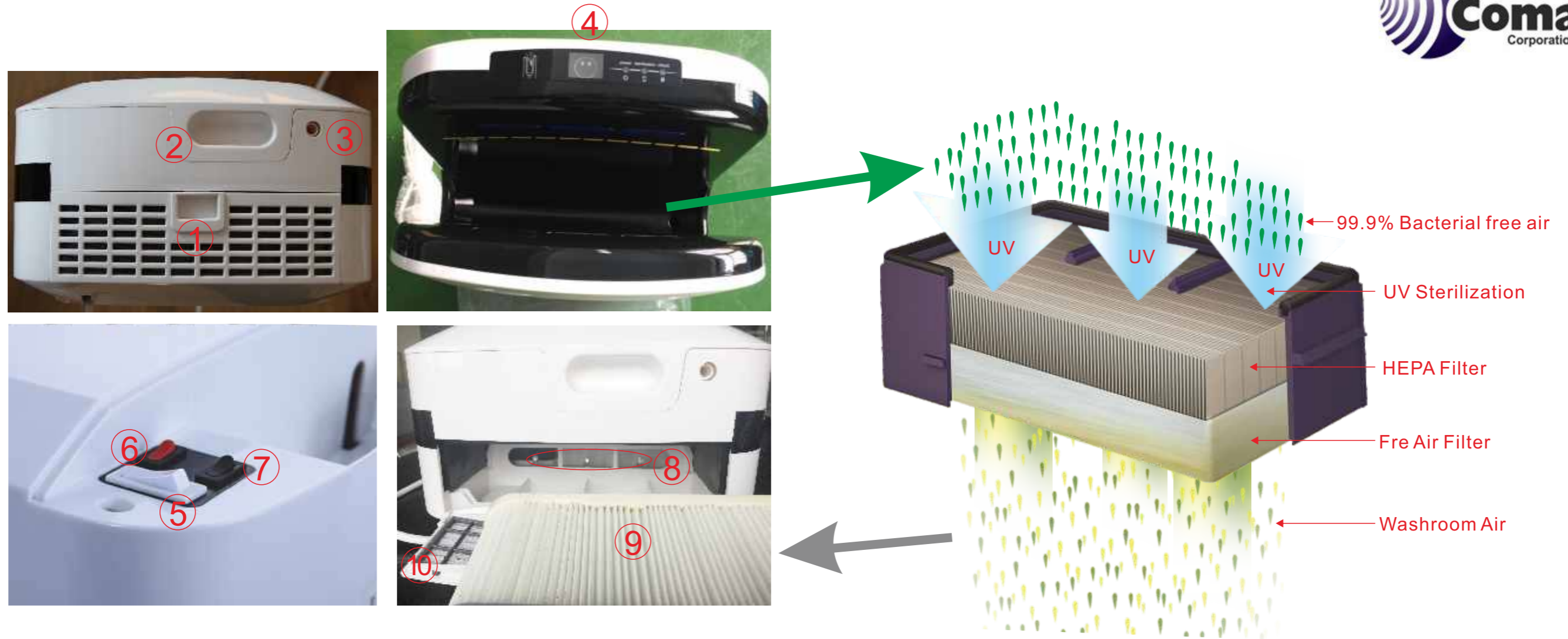
## PRODUCT FEATURES

- THIN design with rapid drying, cost effective and most hygienic.
- Using highly efficient motor to create strong winds to sweep the water off from hands.
- Dry hands in 7 seconds by super-powered jet air.
- 3-point infrared sensor.
- Brushless powerful motor and HEPA filter to create clean air without bacteria.
- Brightness unique LED indicator.
- 25 seconds continuous timer protection.
- Clean air by UV sterilization to keep air bacteria free.
- No disposal, storage and labor cost compared with paper towel, only clean once a day.
- Up to 90% saving compared to paper towel costs.
- Intelligent heat element active only ambient temperature is less than 25°C.
- ECO-friendly product by power saving clean technology.

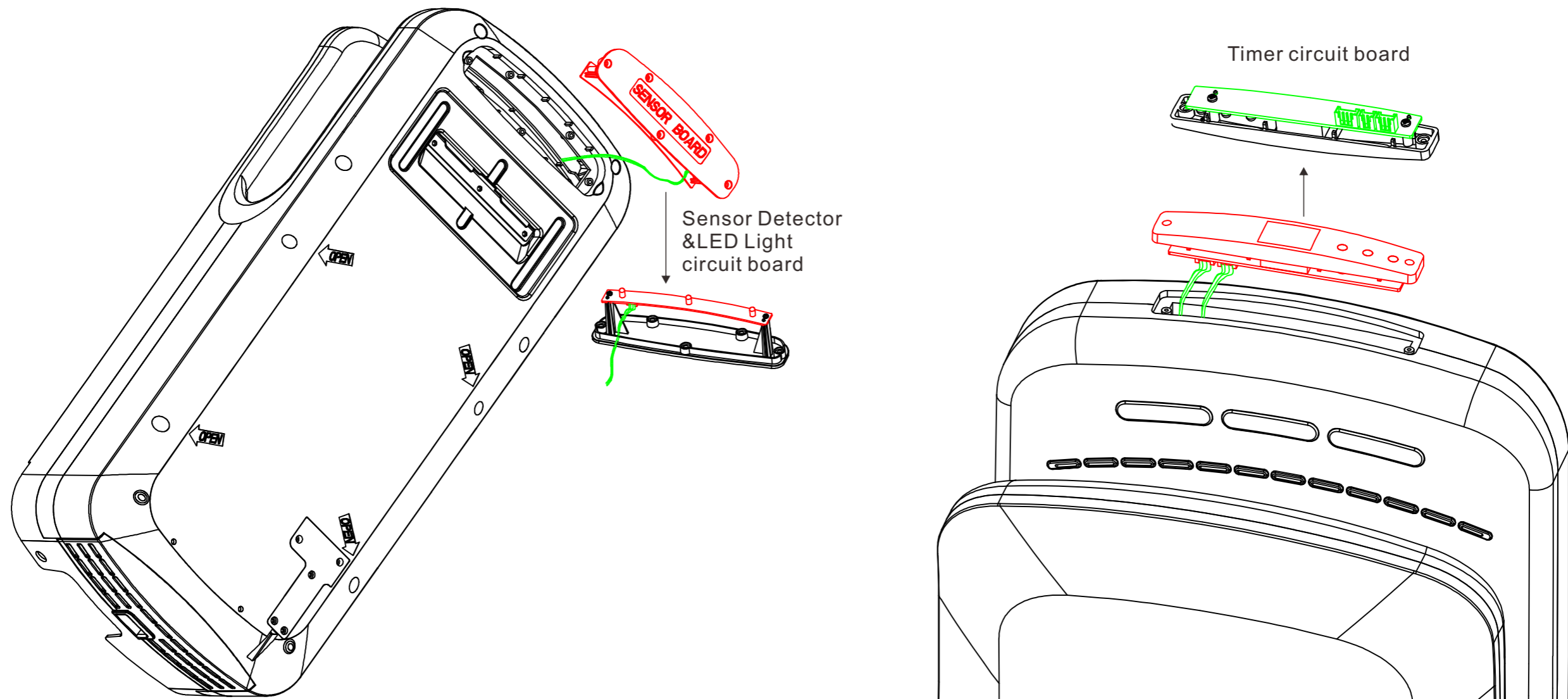
Voltage	220V-240V 50/60Hz or 110V-120V 60Hz	
Consumption Power	1850W(Heater ON)/750W(Heater OFF)	
Standby Power	<2W	
Air Temperature	40°C(Room Temperature=25°C)	
Air Velocity	100M/S	
Air Flow	158M <sup>3</sup> /H	
Drying Time	7-10Seconds	
Safety Timer	25Seconds	
Operation	Touch free infrared sensor	
Protection Level	IPX1	
Electrical Isolation	CLASS 1	
Noise Level	65dB(At 1M)	
Sterilization	HEPA Filter+UV lamp+Pre-Filter	
Drain Tank	500ml	
Material	Anti broken ABS plastic	
Motor	Brushless Motor or Brush Motor 22000RMP	
Unit Net Weight	7.5kg/Brush Motor; 9.3kg/Brushless Motor	
Unit Gross Weight	9.2kg/Brush Motor; 11.8kg/Brushless Motor	

<b>DUAL FLOW</b>	<b>C-500220000</b>		<b>Brushed</b>	<b>828235092227</b>
	<b>C-500230000</b>		<b>Champagne</b>	<b>828235093228</b>
	<b>C-500000000</b>		<b>White</b>	<b>828235094229</b>





- ① Press back & down to open pre air filter and HEPA.
- ② Pull front to open water tray.
- ③ Water overflow hole: Available to connect one pipe to floor drain directly. No need to empty tray everyday !
- ④ Welcome Smiling Face Timer.
- ⑤ Hand Dryer Power ON/OFF switch: The hand dryer can be powered off if needed.
- ⑥ Air Hot/Cold Switch: In hot weather such Summer, the heat element can be powered off to save energy.
- ⑦ Speed High/Low Switch: Set at Low position get low noise at some sensitive place.
- ⑧ UV sterilization: 3Points UV light setting to have 360° kill the bacterial in air even filtered by HEPA.
- ⑨ HEPA filter: 99.9% bacterial filtered to have pure clean air.
- ⑩ Pre filter: Filter that of a little big particulate in the air.



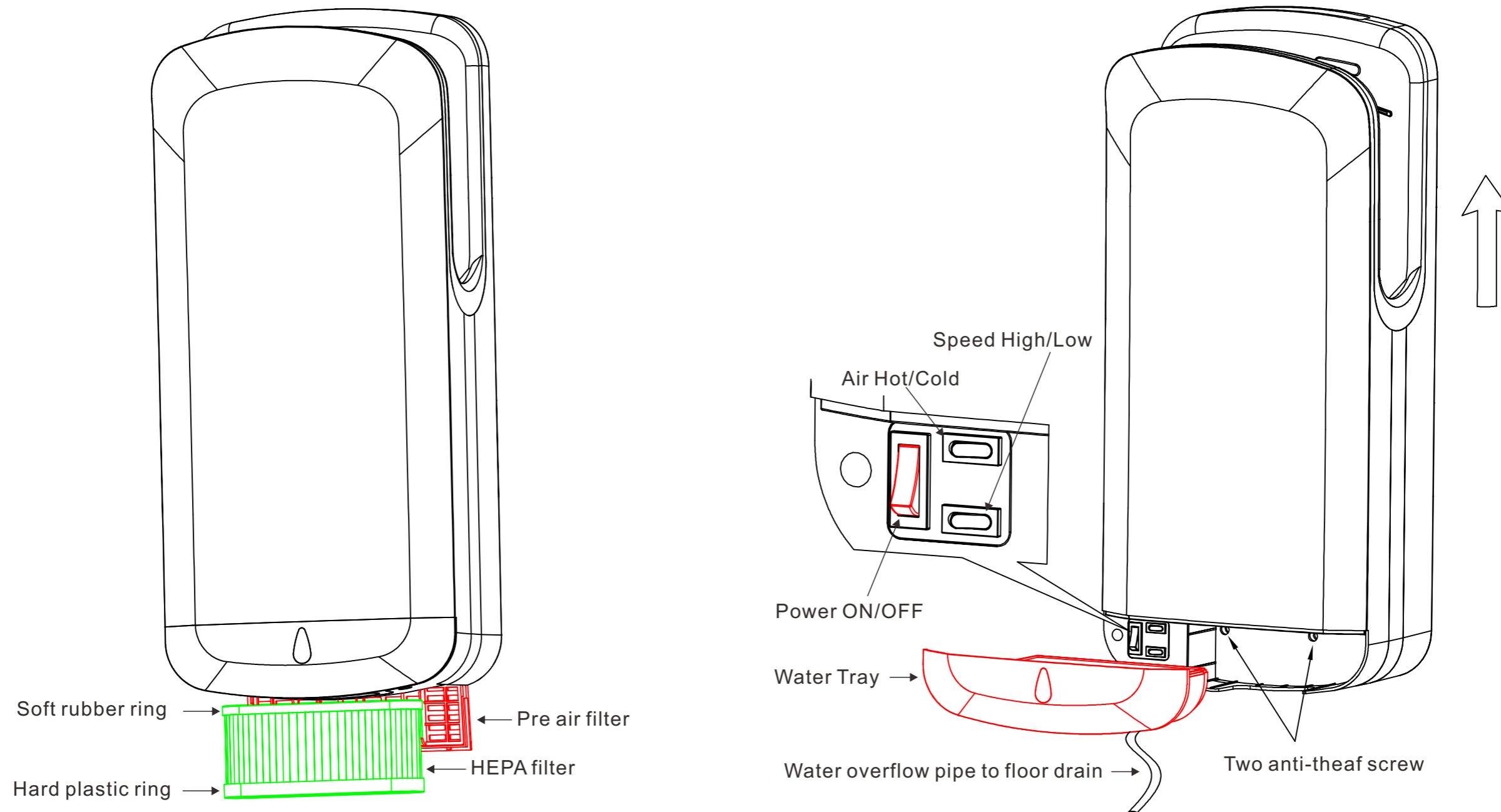
**Replace Sensor Detector&LED Light Circuit Board:**

1. Loose two screw on the sensor detector&LED light circuit board holder. Use a screwdriver to pull the cover a little to open it.
2. Take cover out lightly and the circuit board will come together ! Be careful there is wire connected on the circuit board.
3. Loose two screw on circuit board and replace a new one.

**Replace Timer Circuit Board:**

1. Move the sticker away. Be careful not damage the hand dryer edge where will affect the surface looking.
2. Loose two screw on the timer circuit board holder. Use a screwdriver to pull the holder a little to open it.
3. Take holder out lightly and the circuit board will come together ! Be careful there is wire connected on the circuit board.
4. Loose two screw on circuit board and replace a new one.
5. After replace the new circuit board right, it is suggested to use a new sticker for good looking.

**! WARNING: Disconnect power at the service breaker or unplug the hand dryer before any servicing & maintenance !**



**Replace HEPA filter:**

1. Press back then down to open pre air filter. Take the HEPA filter out. When replace a new HEPA, be sure that the HEPA's rubber ring at upside.

**Replace water tray and uninstall hand dryer from wall:**

1. If there is a water overflow pipe connected, please move it.
2. Pull front to take the water tray out. Then loose two anti-theaf screw<Only the HEAP is moved when refix these two screw>.
3. First pull up then pull front to take hand dryer from wall. Take it careful which weighs 11KG.
5. After reinstallation, before replace water tray, there is an option to run the dryer heater On or OFF and air speed High or Low. The switch is clearly marked.











