

# Nonmetallic Sheathed Cable

Connectors

# IBERVILLE®

## Technical Specifications



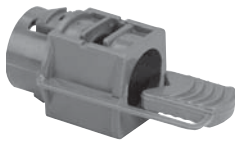
**CI2166 /  
CI2167**

Zinc Die Cast Locknut



**CI2175**

Zinc Die Cast Locknut



**CI3360**

Rated 105°C



**CI4004 /  
W100LX-D**



**CI4006-FP3**



**CI4040**



**CI9049**



Cat. No.	Trade Size	Clamping Range		Suggested Application NMD90 (loomex)
		min.	max.	
<b>One Screw Connectors (Aluminum)</b>				
<b>CI2166</b>	1/2	0.50	0.90	8/3-6/3
<b>CI2167</b>	3/4	0.71	1.10	6/3-4/3
<b>Duplex Connectors (Zinc Alloy)</b>				
One Screw				
<b>CI2175</b>	3/8	0.15	0.65	14/2-10/2; 14/3-10/3
<b>Nonmetallic Connectors</b>				
<b>CI3360</b>	1/2	0.30	0.60	14/2-10/2; 14/3-10/3 2 cables: 14/2-12/2
<b>CI4004</b>	1/2	0.21	0.42	14/2-10/2; 14/3-10/3 2 cables: 14/2-12/2
<b>CI4006-FP3</b>	3/4	0.585	0.735	8/3-6/3
<b>W100LX-D</b>	1/2	0.21	0.42	14/2-10/2; 14/3-10/3 2 cables: 14/2-12/2
<b>One Screw Connectors (Steel)</b>				
<b>CI4040</b>	3/8	0.19	0.57	14/2-10/2; 14/3-10/3 2 cables: 14/2
<b>CI9049</b>	3/8	0.13	0.37	14/2-10/2; 14/3-12/3

All NMD90 connectors are also suitable for NMWU90 of equivalent diameters, in dry locations.  
NOTE: 3/8 trade size connectors require a 1/2" knockout.

Technical improvements are constantly taking place in the electrical industry. The cable manufacturers are changing their products from time to time. Accordingly, it is strongly suggested that you verify the cable size with the cable manufacturer prior to selecting a connector.