

# Condulet EAJ conduit outlet boxes with covers

Cl. I, Div. 1 & 2, Groups A, B, C, D  
 Cl. II, Div. 1, Groups E, F, G  
 Cl. II, Div. 2, Groups F, G  
 Cl. III  
 NEMA 3, 4, 7ABCD, 9EFG

Explosionproof  
 Dust-ignitionproof  
 Raintight  
 Wet Locations

3F  
 3F

## Applications:

- EAJ conduit outlet boxes are installed in conduit systems within hazardous areas to:
- Protect conductors in threaded rigid conduit
  - Act as pull and splice boxes
  - Interconnect lengths of conduit
  - Change conduit direction
  - Provide access to conductors for maintenance and future system changes
  - Act as mounting outlets for fixtures (with appropriate covers)
  - Act as sealing fittings (with appropriate covers)

## Features:

- EAJ conduit outlet boxes have:
- Water shedding cover – suitable for wet locations when mounted in upright position
  - External cover threads on body protecting conductors from damage during pulling
  - No pinching of conductors during cover installation
  - Six different hub arrangements
  - Taper threaded hubs to provide ground continuity
  - Smooth integral hub bushing to protect conductor insulation when pulling
  - Internally threaded cover openings for additional wiring room
  - Flat overlapping threaded covers furnished with boxes
  - Weather-resistant finish
  - Internal green ground screw #10
  - Four standard mounting pads, except for EAJB and EAJD

## Certifications and compliances:

### NEC/CEC:

- Class I, Divisions 1 & 2, Groups A, B, C, D
- Class II, Division 1, Groups E, F, G
- Class II, Division 2, Groups F, G
- Class III

### UL standard:

- UL1203

### CSA standard:

- C22.2 No. 30

## Standard materials:

- Body – Feraloy iron alloy
- Cover – copper-free aluminum

<sup>A</sup> Form 9 products with 5" cover opening are not suitable for Group A.

<sup>B</sup> Available in copper-free aluminum. To order, add suffix 'SA' to end of catalog number.

<sup>C</sup> EAJ0687 is listed for Groups C and D only.

## Standard finishes:

- Feraloy iron alloy – electrogalvanized and aluminum acrylic paint
- Aluminum – natural

## Options:

- | Description  | Suffix      |
|--|-------------|
| • Bodies – copper-free aluminum .....                      | <b>SA</b>   |
| • Covers – Feraloy iron alloy.....                         | <b>WOD</b>  |
| <i>Electrogalvanized and aluminum acrylic paint finish</i> |             |
| • Corro-free epoxy powder coat.....                        | <b>S752</b> |

## Ordering information:

### EAJB



Cover opening dia.	Hub size	Cat. #
3 1/16"	1/2"	EAJB16
3 3/16"	3/4"	EAJB26 <sup>B</sup>
3 7/16"	1"	EAJB36 <sup>B</sup>

### EAJC



Cover opening dia.	Hub size	Cat. #
3 1/16"	1/2"	EAJC16 <sup>B</sup>
3 3/16"	3/4"	EAJC26 <sup>B</sup>
3 7/16"	1"	EAJC36 <sup>B</sup>

### EAJD



Cover opening dia.	Hub size	Cat. #
3 1/16"	1/2"	EAJD16
3 3/16"	3/4"	EAJD26 <sup>B</sup>
3 7/16"	1"	EAJD36 <sup>B</sup>

### EAJL



Cover opening dia.	Hub size	Cat. #
3 1/16"	1/2"	EAJL16 <sup>B</sup>
3 3/16"	3/4"	EAJL26 <sup>B</sup>
3 7/16"	1"	EAJL36 <sup>B</sup>

### EAJT



Cover opening dia.	Hub size	Cat. #
3 1/16"	1/2"	EAJT16 <sup>B</sup>
3 3/16"	3/4"	EAJT26 <sup>B</sup>
3 7/16"	1"	EAJT36 <sup>B</sup>
5"	1 1/4"	EAJT49 <sup>A, B</sup>
5"	1 1/2"	EAJT59 <sup>A, B</sup>
5"	2"	EAJT69 <sup>A, B</sup>

### EAJX



Cover opening dia.	Hub size	Cat. #
3 1/16"	1/2"	EAJX16 <sup>B</sup>
3 3/16"	3/4"	EAJX26 <sup>B</sup>
3 7/16"	1"	EAJX36 <sup>B</sup>

## Size ranges:

- Hub – 1/2" to 2"
- Cover opening – 3 3/16" to 5" diameter

## EAJ threaded covers

### Flat covers



Cover opening dia.	Cat. #
3 1/16"	EAJ06
5"	EAJ09

## Dome covers



Cover opening dia.	Depth	Cat. #
3 1/16"	2"	EAJ0612

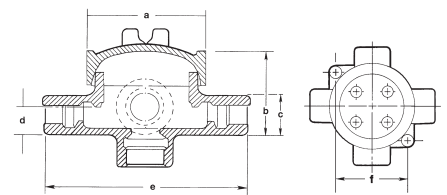
## Fixture covers

### Union hub type



Cover opening dia.	Fixt. stem size	Cat. #
3 1/16"	3/4"	EAJ0687 <sup>C</sup>

## Dimensions (in inches):



Cat. #	a	b	c	d	e	f
16	3 3/4	2 11/32	1 1/2	3/4	5 9/16	3 3/32
26	3 3/4	2 25/32	1 3/4	7/8	5 9/16	3 3/32
36	3 3/4	2 25/32	1 3/4	7/8	5 9/16	3 3/32
49	5 3/4	4 1/16	2 1/16	1 3/32	7 3/16	4 3/4
59	5 3/4	4 1/16	3	1 1/2	7 13/16	4 3/4
69	5 3/4	4 1/16	3	1 1/2	7 13/16	4 3/4

# Condulet EAJ conduit outlet boxes

## Factory installed terminal block ordering guide

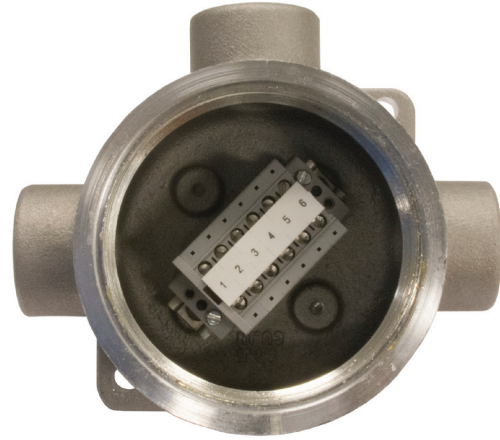
### Ordering information:

#### DIN rail mounted terminal blocks

##### Electrical specifications:

30A, 150V, AWG 26-10

Cat. #	Description
DIN12	DIN rail mounted, 2 terminal blocks EAJ (shapes X, C, L, T) Form 6 & 9 cover diameter openings
DIN13	DIN rail mounted, 3 terminal blocks EAJ (shapes X, C, L, T) Form 6 & 9 cover diameter openings
DIN14	DIN rail mounted, 4 terminal blocks EAJ (shapes X, C, L, T) Form 6 & 9 cover diameter openings
DIN16	DIN rail mounted, 6 terminal blocks EAJ (shapes X, C, L, T) Form 6 & 9 cover diameter opening
DIN18	DIN rail mounted, 8 terminal blocks EAJ (shape T) Form 9 cover diameter opening
DIN112	DIN rail mounted, 12 terminal blocks EAJ (shape T) Form 9 cover diameter opening



#### Direct mounted terminal blocks

##### Electrical specifications:

30A, 300V, AWG 26-10

Cat. #	Description
TB14	Direct mounted terminal block, 4 terminal blocks EAJ (shapes X, C, L, T) Form 6 & 9 cover diameter openings
TB16	Direct mounted terminal block, 6 terminal blocks EAJ (shapes X, C, L, T) Form 6 & 9 cover diameter openings
TB18	Direct mounted terminal block, 8 terminal blocks EAJ (shape T) Form 9 cover diameter opening
TB112	Direct mounted terminal block, 12 terminal blocks EAJ (shape T) Form 9 cover diameter opening

