

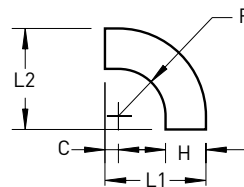
### FEATURES

- Strong corrosion resistant steel construction
- Rolled edge for cable protection
- Unique design allows covers to snap on
- 18 gage steel (t)

### COMPATIBLE COVER

#### FTCV090

(sold separately)



	TRAY HEIGHT (H)		TRAY WIDTH (W)		RADIUS (R)		LENGTH 1 (L1)		LENGTH 2 (L2)		TANGENT (C)		WEIGHT		PG	BL	YL	OR
	INCHES	MM	INCHES	MM	INCHES	MM	INCHES	MM	INCHES	MM	INCHES	MM	LBS	KG	STANDARD	OPTIONAL		
FTV090 50/50	2.0	50	2.0	50	0.8	20	3.9	100	3.9	100	1.2	30	0.4	0.17	341 038	960 049	960 405	960 228
FTV090 50/100	2.0	50	3.9	100	5.0	127	8.3	210	8.3	210	1.2	30	1.1	0.51	341 039	960 050	960 406	960 229
FTV090 50/200	2.0	50	7.9	200	5.0	127	8.3	210	8.3	210	1.2	30	1.6	0.71	341 041	960 051	960 407	960 230
FTV090 50/300	2.0	50	11.8	300	5.0	127	8.3	210	8.3	210	1.2	30	2.0	0.91	341 042	960 052	960 408	960 231
FTV090 100/100	3.9	100	3.9	100	5.9	150	11.9	301	11.9	301	2.0	50	3.3	1.50	341 054	960 053	960 409	960 232
FTV090 100/200	3.9	100	7.8	200	5.9	150	11.9	301	11.9	301	2.0	50	4.5	2.06	341 056	960 054	960 410	960 233
FTV090 100/300	3.9	100	11.8	300	5.9	150	11.9	301	11.9	301	2.0	50	5.8	2.64	341 057	960 055	960 411	960 234
FTV090 100/500	3.9	100	19.7	500	5.9	150	11.9	301	11.9	301	2.0	50	8.4	3.80	341 059	960 056	960 412	960 235
FTV090 100/600	3.9	100	23.6	600	5.9	150	11.9	301	11.9	301	2.0	50	10.1	4.60	341 007	960 057	960 413	960 236

FINISHES		
SYMBOL	MATERIAL	FINISH & STANDARD
STANDARD	PG	Carbon Steel <b>Pre-Galvanized:</b> Continuous Galvanization Before Fabrication ASTM A 653
	BL	Carbon Steel ASTM A510 Grade 1008 <b>Black Painted:</b> Black Powder Coated ASTM D 3451
OPTIONAL	YL	Carbon Steel ASTM A510 Grade 1008 <b>Yellow Painted:</b> Yellow Powder Coated ASTM D 3451
	OR	Carbon Steel ASTM A510 Grade 1008 <b>Orange Painted:</b> Orange Powder Coated ASTM D 3451

**Legrand/Cablofil**  
 8319 State Route 4  
 Mascoutah, IL 62258 USA  
 1-800-658-4641  
 618-566-3230  
 Fax 618-566-3250  
[www.legrand.us/cablofil](http://www.legrand.us/cablofil)