

Standard Sizes INLINE® Stainless Steel Screw Cover Enclosures

Type 304 Catalog Number	Type 316L Catalog Number	Enclosure Size A x B x C	* Panel Catalog Number	Panel Size D x E	Mounting G x H	F
L-SC151512SS	◇ L-SC151512SS6	150 x 150 x 120 (5.91 x 5.91 x 4.72)	L-P1515	131 x 131 (5.16 x 5.16)	132 x 85 (5.20 x 3.35)	105 (4.13)
L-SC201512SS	◇ L-SC201512SS6	200 x 150 x 120 (7.87 x 5.91 x 4.72)	L-P2015	181 x 131 (7.13 x 5.16)	182 x 85 (7.17 x 3.35)	105 (4.13)
L-SC252015SS	◇ L-SC252015SS6	250 x 200 x 150 (9.84 x 7.87 x 5.91)	L-P2520	231 x 181 (9.09 x 7.13)	232 x 135 (9.13 x 5.31)	135 (5.31)
L-SC302515SS	◇ L-SC302515SS6	300 x 250 x 150 (11.81 x 9.84 x 5.91)	L-P3025	281 x 231 (11.06 x 9.09)	282 x 185 (11.10 x 7.28)	135 (5.31)
L-SC353020SS	◇ L-SC353020SS6	350 x 300 x 200 (13.78 x 11.81 x 7.87)	L-P3530	331 x 281 (13.03 x 11.06)	332 x 235 (13.07 x 9.25)	185 (7.28)

Standard Sizes INLINE® Stainless Steel Hinged Cover Enclosures

Type 304 Catalog Number	Type 316L Catalog Number	EMC Catalog Number	Enclosure Size A x B x C	* Steel Panel Catalog Number	* Zinc-Plated Steel Panel Catalog Number	Panel Size D x E	Mounting G x H	F
L-HC151512SS	◇ L-HC151512SS6	◇ L-HC151512EMC	150 x 150 x 120 (5.91 x 5.91 x 4.72)	L-P1515	L-P1515G	131 x 131 (5.16 x 5.16)	132 x 85 (5.20 x 3.35)	105 (4.13)
L-HC201512SS	◇ L-HC201512SS6	◇ L-HC201512EMC	200 x 150 x 120 (7.87 x 5.91 x 4.72)	L-P2015	L-P2015G	181 x 131 (7.13 x 5.16)	182 x 85 (7.17 x 3.35)	105 (4.13)
L-HC252015SS	◇ L-HC252015SS6	◇ L-HC252015EMC	250 x 200 x 150 (9.84 x 7.87 x 5.91)	L-P2520	L-P2520G	231 x 181 (9.09 x 7.13)	232 x 135 (9.13 x 5.31)	135 (5.31)
L-HC302515SS	◇ L-HC302515SS6	◇ L-HC302515EMC	300 x 250 x 150 (11.81 x 9.84 x 5.91)	L-P3025	L-P3025G	281 x 231 (11.06 x 9.09)	282 x 185 (11.10 x 7.28)	135 (5.31)
L-HC353020SS	◇ L-HC353020SS6	◇ L-HC353020EMC	350 x 300 x 200 (13.78 x 11.81 x 7.87)	L-P3530	L-P3530G	331 x 281 (13.03 x 11.06)	332 x 235 (13.07 x 9.25)	185 (7.28)

Standard Sizes INLINE® Stainless Steel Window Cover Enclosures

Type 304 Catalog Number	Type 316L Catalog Number	Enclosure Size A x B x C	* Panel Catalog Number	Panel Size D x E	Mounting G x H	Window Size M x N	F
L-WC201512SS	◇ L-WC201512SS6	200 x 150 x 120 (7.87 x 5.91 x 4.72)	L-P2015	181 x 131 (7.13 x 5.16)	182 x 85 (7.17 x 3.35)	149 x 65 (5.87 x 2.56)	101 (3.98)
L-WC252015SS	◇ L-WC252015SS6	250 x 200 x 150 (9.84 x 7.87 x 5.91)	L-P2520	231 x 181 (9.09 x 7.13)	232 x 135 (9.13 x 5.31)	199 x 115 (7.83 x 4.53)	131 (5.16)
L-WC302515SS	◇ L-WC302515SS6	300 x 250 x 150 (11.81 x 9.84 x 5.91)	L-P3025	281 x 231 (11.06 x 9.09)	281 x 185 (11.06 x 7.28)	249 x 165 (9.80 x 6.50)	131 (5.16)
† L-WC204015SS	◇ L-WC204015SS6	200 x 400 x 150 (7.87 x 15.75 x 5.91)	L-P2040	181 x 381 (7.13 x 15.00)	182 x 335 (7.17 x 13.19)	115 x 349 (4.53 x 13.74)	131 (5.16)
† L-WC206015SS	◇ L-WC206015SS6	200 x 600 x 150 (7.87 x 23.62 x 5.91)	L-P2060	181 x 581 (7.13 x 22.87)	182 x 535 (7.17 x 21.06)	115 x 549 (4.53 x 21.61)	131 (5.16)

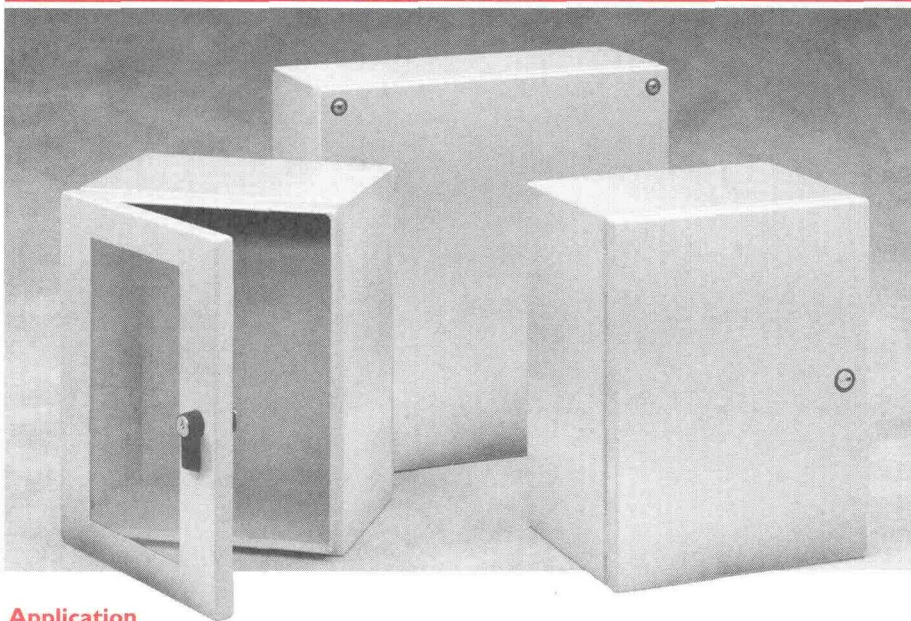
Inch dimensions in ().

* Panels must be ordered separately.

† Hinged on side "B" of enclosure.

◇ Product available for shipment within 10 working days.

INLINE® Stainless Steel Instrumentation Enclosures



Application

INLINE® enclosures house and protect sensitive electrical or electronic components from harsh, dirty environments. For use in installations where dirt, dust, oil, water, or other contaminants are present. Streamlined styling, flush latching, and an attractive durable finish complement high-tech electronic equipment. INLINE window enclosures are uniquely suited to protect field bus components and other instrumentation devices.

Construction

- 16 gauge Type 304 or Type 316L stainless steel
- Seams continuously welded and ground smooth
- Body flange trough excludes liquids and contaminants; flange directs liquids away from the enclosure opening
- Large perimeter opening facilitates component installation, maintenance, or conversion
- Fastening holes in back of body for direct mounting or optional external mounting feet
- Seamless foam-in-place one piece gasket on standard models provides oil-tight and dust-tight seal against contaminants
- Ground studs (M6) provided on cover and door
- Furnished hardware kit consists of panel mounting screws, grounding hardware, and sealing washers for wall-mounting holes
- Installation instructions for enclosure and accessories are provided
- Optional 12 gauge (2.7mm) panels are available

INLINE screw cover enclosures

- Captivated Type 316 stainless steel cover screws with sealing bushings made of a durable composite material
- Integral compression stops maintain optimal gasket compression

INLINE hinged cover enclosures

- 180 degree door opening

- Removable hinge pins (Type 316 stainless steel)
 - Standard self-grounding quarterturn Type 316 stainless steel latch system with double seal provides maximum protection against contamination
- INLINE window cover enclosures
- 3/16-inch (4.8mm) clear polycarbonate window is mounted flush with cover surface
 - 180 degree door opening
 - Removable Type 316 stainless steel hinge pins
 - Standard self-grounding slotted quarterturn Type 316 stainless steel latch system with double seal provides maximum protection against contamination

Finish

Enclosures are unpainted. Cover and body have smooth brushed finish. Optional steel panels are white.

Subpanels are available in conductive zinc plated or white enamel finish.

Industry Standards

- INLINE screw cover enclosures
UL 508, File No. E61997: Type 4, Type 4X, and Type 12
NEMA/EEMAC Type 4, Type 4X and Type 12
CSA File No. LR42186: Type 4, Type 4X, and Type 12
VDE IP66
IEC 60529, IP66
- INLINE hinged cover enclosures
UL 508, File No. E61997: Type 4, Type 4X, and Type 12
NEMA/EEMAC Type 4, Type 4X and Type 12
CSA File No. LR42186: Type 4, Type 4X, and Type 12
VDE IP66
IEC 60529, IP66

- INLINE window cover enclosures
UL 508, File No. E61997: Type 4, Type 4X, and Type 12
NEMA/EEMAC Type 4, Type 4X and Type 12
CSA File No. LR42186: Type 4, Type 4X, and Type 12
VDE IP66
IEC 60529, IP55

Accessories

- DIN Rail or Panel Mounting Bracket
- DIN Rails
- Grounding Kit
- Key Inserts
- Mounting Foot Kit
- Panels
- Wing Knob Latch

Modification Services™ Program

You can customize this product to your unique requirements by specifying from these options:

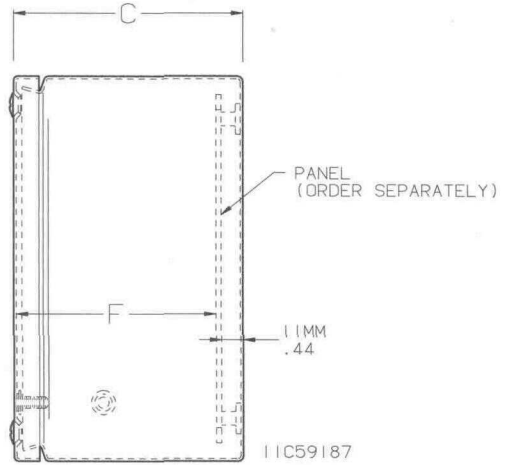
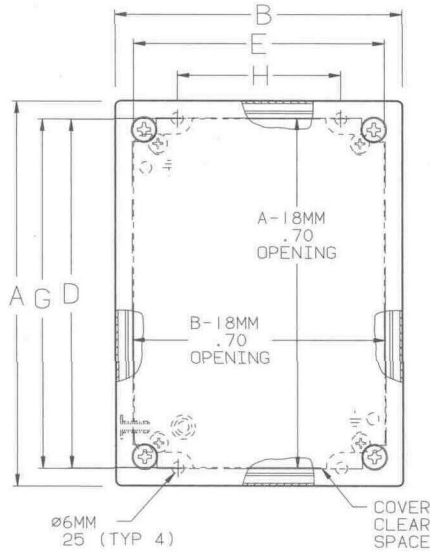
- Enclosure height, width, depth
- Holes and cutouts in body, doors, subpanels
- Tapped holes, fasteners, mounting channel in enclosure and subpanel
- Mounting (adds and deletes)
- Doors
- Subpanels
- Thermal management (louvers, fans, filters)
- Windows
- Standard accessories
- Drip shield

For details, see Modification Services at hoffmanonline.com.

To order, contact your local Hoffman sales representative.

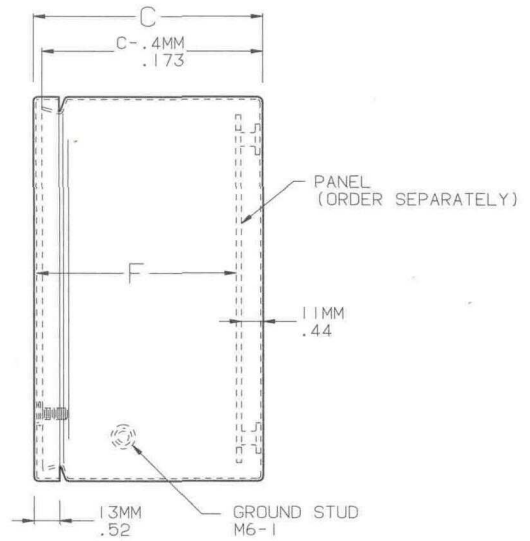
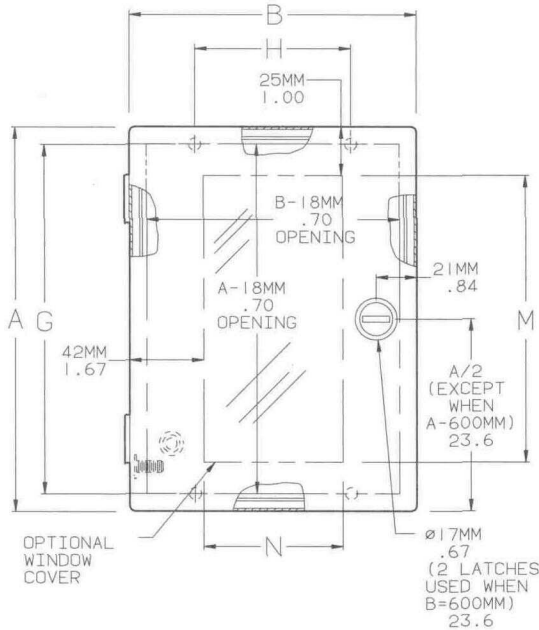
INLINE® Stainless Steel Instrumentation Enclosures

■ INLINE® Stainless Steel Screw Cover Enclosure



- NOTE:
1. Panels are 2.7mm (12 gauge) steel.
 2. Panel screws are M5-0.8 pan head.
 3. Rear mounting holes will accommodate M6-1.0 or 1/4-20 UNC mounting screws (supplied by customer).

■ INLINE® Stainless Steel Hinged Cover and Window Cover Enclosures



- NOTE: Hinged on "B" side of enclosure when B = 400mm or 600mm.

**Millimeter
Inch**