

MICRO SWITCH

FREEPORT ILLINOIS, U.S.A
A DIVISION OF HONEYWELL
FED. MFG. CODE 91929

SWITCH - BASIC

CATALOG LISTING
BZ-2RW822725551-A2

AQC6000

BZ-2RW822725551-A2

REPLACES
PAGE 1 OF 1
RELEASE NO. PR-1040

M

DRAWING NUMBER

9

ISSUE

RJ

25 NOV 05

CHECK

70

4 FEB 70

GNT

CHECK

70

4 FEB 70

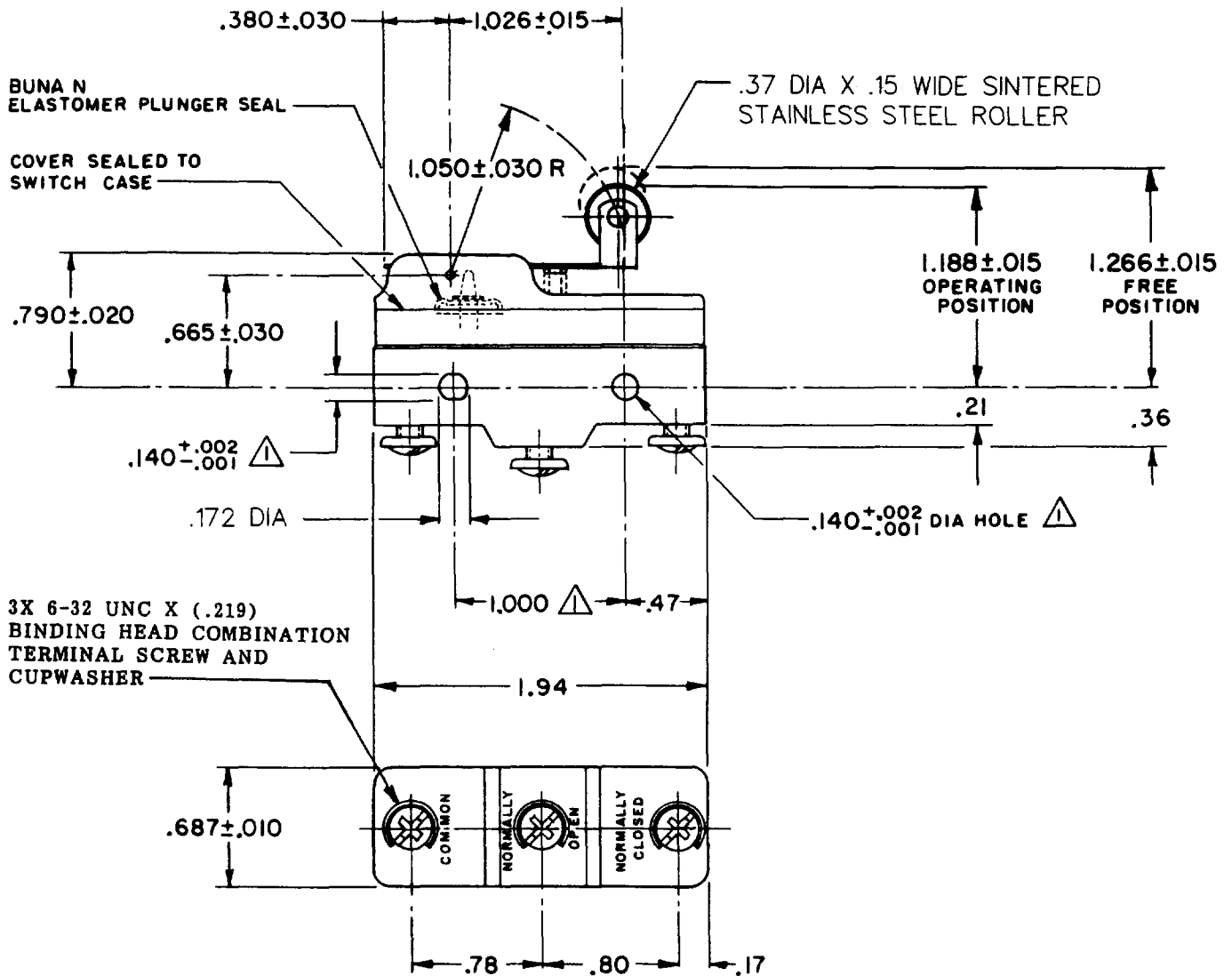
LSD

CHECK

69

22 DEC 69

GCH



REVISIONS

A	C031576	JAH	23 JAN 73
B	C067209	JAP	2 MAY 90
C	CO-70184-G	GJW	13 MAR 92
D	CO-73287-J	JAL	22 NOV 93
E	CO-75204-B	WLS	1 FEB 94
F	CO-77589	TSM	29 MAR 94
G	C093346	DLT	19 AUG 98
H	0015929	DVM	25 NOV 05

RASTER

DRAWN

FO-50376-1A

NOTES

- ▲ - MOUNTING HOLES WILL ACCEPT PINS OR SCREWS OF .139 MAX DIA ON 1.000 ± .002 CENTERS
- 2 - SEALED CONSTRUCTION PROVIDES SPLASH RESISTANCE
- 3 - CONTACT MATERIAL - GOLD ALLOY

THIS DRAWING COVERS A PROPRIETARY ITEM AND IS THE PROPERTY OF MICRO SWITCH, A DIVISION OF HONEYWELL. THIS DRAWING IS NOT TO BE COPIED OR USED WITHOUT THE APPROVAL OF MICRO SWITCH.

CHARACTERISTICS

OPERATING FORCE ----- 6 OZ MAX
RELEASE FORCE ----- 1 1/2 OZ MIN
DIFFERENTIAL TRAVEL ----- .003 - .020
OVERTRAVEL ----- .094 MIN

ELECTRICAL DATA

CONTACT ARRANGEMENT
S P D T

L22 1A 125 VAC

L288
L315-
L307



1A 250V ~ T85 25E3

SCALE FULL

DO NOT SCALE PRINT

UNLESS OTHERWISE NOTED

DIMENSIONS ARE IN INCHES

TOLERANCES ARE:

ONE PLACE	(.0)	± .030
TWO PLACE	(.00)	± .015
THREE PLACE	(.000)	± .005
ANGLES		±

WEIGHT