

CLAMP METERS

MEASURES AMPERAGE, VOLTAGE, RESISTANCE AND CONTINUITY

- 1000A, 660A, 600A, 400A & 200A AC/DC models
- cULus, CE & RCM listed
- Patented TightSight® bottom display (61-775, 61-765, 61-757, 61-747 & 61-415)
- Built in flashlight (61-757, 61-747, 61-415, 61-405) and probe/lead holders (61-757, 61-747, 61-737, 61-415, 61-405)
- Magnetic strap mount (61-757, 61-747, 61-737, 61-415, 61-405)



TightSight® Display

TIGHTSIGHT® CLAMP METERS



61-775

1000A AC/DC Clamp Meter
TightSight® w/Backlight
CAT IV 600V | CAT III 1000V



61-765

660A AC/DC Clamp Meter
TightSight® w/Backlight
CAT IV 600V | CAT III 1000V



61-757

600A AC/DC Clamp Meter
TightSight® w/Backlight &
Flashlight
CAT IV 600V | CAT III 1000V



61-747

400A AC/DC Clamp Meter
TightSight® w/Backlight &
Flashlight
CAT III 600V



61-415

200A AC/DC Split Jaw Meter
TightSight® w/Backlight &
Flashlight
CAT IV 600V | CAT III 1000V

CONVENTIONAL CLAMP METERS



61-744

400A AC Clamp Meter
4000 Count & Flashlight
CAT III 600V



61-737

400A AC Clamp Meter
4000 Count w/Backlight
CAT III 600V



61-405

200A AC Split Jaw Meter
w/Backlight & Flashlight
CAT III 600V

CLAMP METER ACCESSORIES



TL-757

Test Leads w/Alligator Clips



UMHS-757

Universal Magnetic Hanging
Strap

IMPORTANT: The clamp meters on this page are intended for use by qualified electricians. Follow the NFPA 70E Standard for Electrical Safety in the workplace when using this tester. Always consult the instruction manual provided with the tester for operational limitations and procedures associated with a specific tester.

THE ELECTRICIAN'S
CHAMPION™



CLAMP METERS

TIGHTSIGHT® | CONVENTIONAL



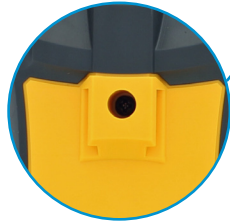
Non-Contact Voltage Tester
Screen displays
Electromagnetic Field (EF)



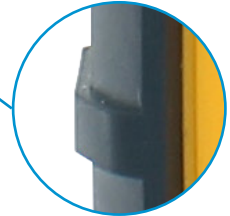
Flashlight



Built-In Probe Tip Holder



Universal Magnetic Strap Clip



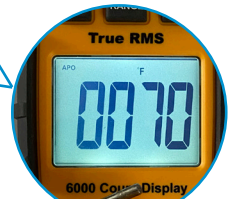
Overmolded Industrial Grip
2M Drop (model specific)



61-757 | 61-747



TightSight® End Display



Backlit Displays

Patented TightSight® Backlit Display eliminates need to bend or twist conductors or place your head near or in the panel and allows you to easily read the bottom display when taking all measurements.



FORK METERS

TIGHTSIGHT® | CONVENTIONAL



Non-Contact Voltage Indication
Built in Clamp Tip



0.75 in. (19mm) Jaw Opening



Flashlight/Backlight



Probe Storage & Lead Holders
(on back)



Delta
(difference from original reading)



Max./Min.







Patented TightSight® Backlit Display eliminates need to bend or twist conductors or place your head near or in the panel and allows you to easily read the bottom display when taking measurements

61-415



CLAMP METERS - TIGHTSIGHT® | CONVENTIONAL

CLAMP METER SELECTION GUIDE				
	61-775	61-765	61-757	61-747
FEATURES				
CAT Rating (Safety)	CAT IV 600V CAT III 1000V	CAT IV 600V CAT III 1000V	CAT IV 600V CAT III 1000V	CAT III 600V
Listing	cULus, CE, RCM	cULus, CE, RCM	cULus, CE, RCM	cULus, CE, RCM
Drop Protection			6.6 ft. (2m)	6.6 ft. (2 m)
Clamp/Jaw Opening	2.0 in. (50.8mm)	1.5 in. (38mm)	1.4 in. (35.5mm)	1.4 in. (35.5mm)
AC Voltage (Volts)	750V	750V	600V	600V
DC Voltage (Volts)	750V	750V	1000V	600V
AC Current (Amps)	1000A	660A	600A	400A
DC Current (Amps)	1000A	660A	600A	400A
Ohms (Resistance)	999.9Ω	999.9Ω	60MΩ	40MΩ
AC Millivolts	—	—	6000	4000
DC Millivolts	—	—	6000	4000
True RMS	✓	✓	✓	✓
High Voltage Alarm	✓	✓	ACV/DCV >30V	ACV/DCV >30V
Audible Continuity	✓	✓	✓	✓
Visual Continuity	✓	✓	✓	✓
Backlight	✓	✓	✓	✓
Temperature	—	—	-40°F ~ 1832°F -40°C ~ 1000°C	-40°F ~ 1832°F -40°C ~ 1000°C
Low Impedance (LoZ)	—	—	Yes	—
NCV	—	—	40-600V	40-600V
Auto Ranging	✓	✓	✓	✓
Range Hold	—	—	✓	✓
Data Hold	✓	✓	✓	✓
Relative	✓	✓	✓	✓
Diode Test	—	—	✓	✓
Capacitance Test	✓	✓	6.000mF	4.000mF
Frequency / Duty Cycle	✓	✓	10Hz-9.999KHz	10Hz-9.999KHz
Max / Min	✓	✓	✓	✓
Magnetic Strap Mount	—	—	✓	✓
Test Probe Holder	—	—	✓	✓
Flashlight	—	—	✓	✓
Auto-Power Off (APO)	✓	✓	✓	✓
APO Disable	✓	✓	✓	✓
Low Battery Indication	✓	✓	✓	✓
Battery Type	1 x 9 Volt	1 x 9 Volt	3 x 1.5V AAA	3 x 1.5V AAA
Bottom LCD Display	✓	✓	✓	✓
LCD Display Count	9999	9999	6000	4000
Warranty	2-Year*	2-Year*	2-Year*	2-Year*
ACCESSORIES				
Leads & Alligator Clips	Included	Included	Included	Included

Specifications are subject to change without notice.

CLAMP METER SELECTION GUIDE



	61-744	61-737	61-415	61-405
FEATURES				
CAT Rating (Safety)	CAT III 600V	CAT III 600V	CAT IV 600V CAT III 1000V	CAT III 600V
Listing	cULus, CE, RCM	cULus, CE, RCM	cULus, CE, RCM	cULus, CE, RCM
Drop Protection		3.3 ft. (1m)	6.6 ft. (2m)	3.3 ft. (1m)
Clamp/Jaw Opening	1.45 in. (36.5mm)	1.4 in. (35.5mm)	0.75 in. (19mm)	0.75 in. (19mm)
AC Voltage (Volts)	600V	600V	1000	1000
DC Voltage (Volts)	600V	600V	1000	1000
AC Current (Amps)	600A	400A	200	200
DC Current (Amps)	—	—	200	—
Ohms (Resistance)	40MΩ	40MΩ	60MΩ	60MΩ
AC Millivolts	—	4000	✓	✓
DC Millivolts	—	4000	✓	✓
True RMS	—	✓	✓	✓
High Voltage Alarm	—	ACV/DCV >30V	ACV/DCV >30V	ACV/DCV >30V
Audible Continuity	✓	✓	✓	✓
Visual Continuity	—	✓	✓	✓
Backlight	—	✓	✓	✓
Temperature	—	-40°F - 1832°F -40°C - 1000°C	—	—
Low Impedance (LoZ)	—	—	—	—
NCV	70-600V	40-600V	40-600V	40-600V
Auto Ranging	✓	✓	✓	✓
Range Hold	✓	✓	✓	✓
Data Hold	✓	✓	✓	✓
Relative	—	✓	✓	✓
Diode Test	—	✓	✓	✓
Capacitance Test	—	400.0μF	6.000mF	6.000mF
Frequency / Duty Cycle	—	10Hz-9.999KHz	—	—
Max / Min	—	✓	✓	✓
Magnetic Strap Mount	—	✓	✓	✓
Test Probe Holder	—	✓	✓	✓
Flashlight	—	—	✓	✓
Auto-Power Off (APO)	✓	✓	✓	✓
APO Disable	—	—	✓	✓
Low Battery Indication	✓	✓	✓	✓
Battery Type	2 x 1.5V AAA	3 x 1.5V AAA	2 x 1.5V AAA	2 x 1.5V AAA
Bottom LCD Display	—	—	✓	—
LCD Display Count	4000	4000	6000	6000
Warranty	2-Year*	2-Year*	2-Year*	2-Year*
ACCESSORIES				
Leads, Case & Batteries	Leads only	Included	Included	Included
Thermocouple	—	Included	—	—

ACCESSORIES



TC-757
Thermocouple



TL-757
Test Leads w/Alligator Clips
For use with all models



TLF-014
Fused Test Lead Kit
Compatible with all testers
(Replacement fuses **TLF-001**
500mA/1000V, Pack of 2)



UMHS-757
Universal Magnetic Hanging Strap
For Use with: 61-757, 61-747, 61-737,
61-415, 61-405



C-770
Nylon Carrying Case
For use with: 61-775



C-757
Nylon Carrying case
For use with: 61-757, 61-747, 61-737,
61-415, 61-405



C-90
Nylon Carrying Case
For use with: 61-744



C-760
Nylon Carrying Case
For Use with: 61-744



Scan with your
smartphone to learn
more

P-6049 (5-21)
©2021 IDEAL INDUSTRIES, INC.

IDEAL CUSTOMER SERVICE:
orderdesk@idealindustries.com
1-800-824-3325
www.idealind.com

THE ELECTRICIAN'S
CHAMPION™

