



LB400H22DT Lowbay

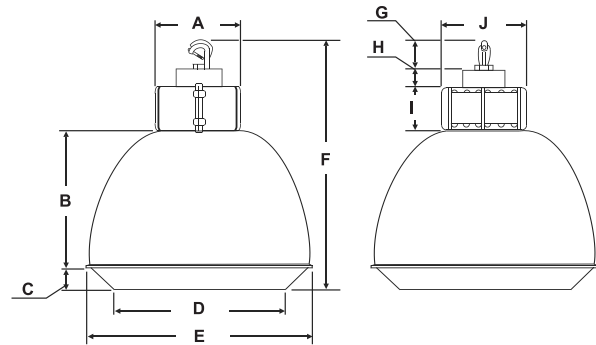
Cat. #		Approvals
Job	Type	

APPLICATIONS

Ideal for applications over 20 ft. in factories, foundries, machine shops, warehouses and large retail stores.

SPECIFICATIONS

- Superior heavy duty die-cast aluminum construction with white powder coating finish.
- Mogul base socket-E39 standard.
- Comes with a hook for easy mounting.
- 22" anodized aluminum reflector.
- MH 400 watts max.
- Tri-Tap® (120, 277, 347V).
- 4 ft. cord included.
- Drop acrylic lens.



LISTINGS

- cUL listed for use in damp locations.

A	B	C	D	E	F	G	H	I	J
9.213 in.	13.39 in.	3.15 in.	Ø17.5 in.	Ø22.3 in.	26.8 in.	3.031 in.	2.165 in.	5.039 in.	8.82 in.
234 mm	340 mm	80 mm	Ø445 mm	Ø566 mm	680 mm	77 mm	55 mm	128 mm	224 mm

ORDERING INFORMATION

Catalogue Number	Lamp Type / Wattage	Volts	Weight	UPC Code
LB400H22DT	Lowbay 400W MH	120, 277, 347V Tri-Tap®	24	80503504804



Hubbell Canada LP, Lighting Division

870 Brock Road South | Pickering, ON | L1W1Z8 | Tel: 905.839.1138

For more information, visit our web site: www.hubbellonline.com