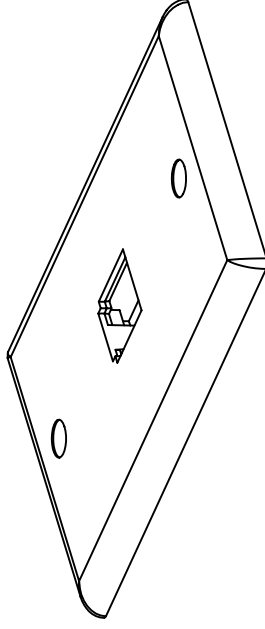
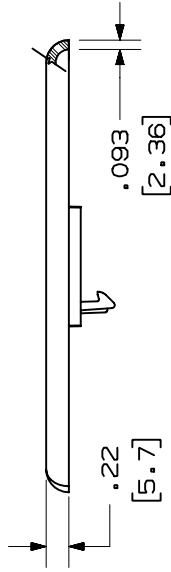
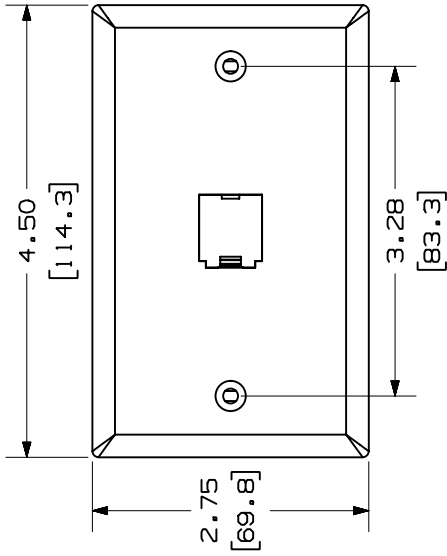


THIS COPY IS PROVIDED ON A RESTRICTED BASIS AND IS NOT TO BE USED IN ANY WAY DETRIMENTAL TO THE INTERESTS OF PANDUIT CORP.



| PANDUIT PART NO. | WEIGHT |
|------------------|---------------------------------|
| CFP1** | .47 LB/10 PCS (212 G/10 PCS) |

NOTES:

- ** 1. SEE CURRENT CATALOG FOR ADDITIONAL PART NUMBER SUFFIXES TO INDICATE COLOR AND OR PACKAGE QUANTITY.
- 2. TWO #6-32 X 1" LONG, SLOTTED PAN HEAD SCREWS WITH NON-THREADED LEAD POINT PROVIDED FOR FASTENING FACEPLATES.
- 3. DIMENSIONS IN PARENTHESES ARE IN METRIC.
- 4. PRODUCT ACCEPTS ANY SINGLE POSITION MINI-COM MODULE.

CAD FILENAME/LAYERS

D35544CU_DC_CFP1_00C.PRT

PANDUIT

CORP. TINLEY PARK, ILLINOIS

A CLASSIC SERIES 1 POSITION **B**
VERTICAL FACEPLATE (CFP1)**
 CUSTOMER DRAWING

UNLESS OTHERWISE SPECIFIED,
 DIMENSIONAL TOLERANCES ARE:
 (.X) ± (.XXX) ±.010 (.3)
 (.XX) ±.03 (.8) ANGLES ±

UNLESS OTHERWISE SPECIFIED,
 ALL DIMENSIONS ARE GIVEN
 IN INCHES, THIRD ANGLE PROJECTION.

DRAWN BY
 JBA

MAT'L:

SCALE
 NONE

DATE
 6-17-97

ABS

DRAWING NO.
 35544-44

DWG
 A

SIZE
 A

| REV | DATE | BY | CHK | DESCRIPTION | ECN | R | CUST | SUP |
|-----|---------|-----|-----|---|----------|---|------|-----|
| 2 | 4-6-00 | JSP | | B. REVISED TITLE, WAS: "DESIGNER SERIES". | | | | |
| 1 | 9-12-97 | RCA | CEF | A. REV'D TITLE WAS MINI-COM 1 POSITION STANDARD VERTICAL FACEPLATE. | 35544-44 | | CEF | |
| R | 6-17-97 | JBA | CEF | RELEASED TO PRODUCTION. | 35544-44 | | CEF | |