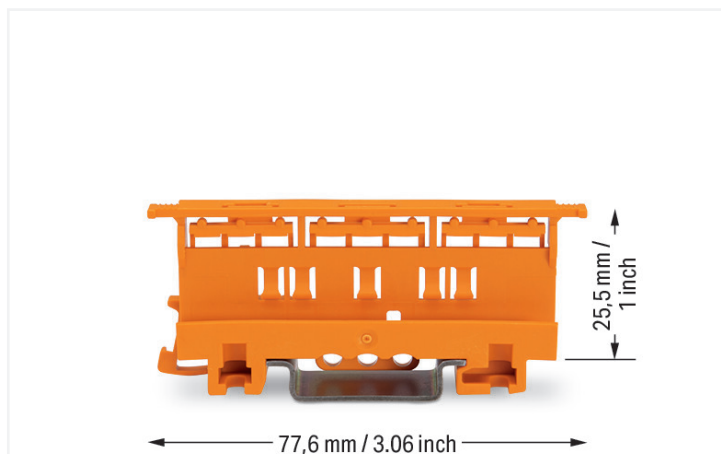


## Data Sheet | Item Number: 221-500

Mounting carrier; 221 Series - 4 mm<sup>2</sup>; for DIN-35 rail mounting/screw mounting;  
orange

<https://www.wago.com/221-500>



Color: ■ orange

### Physical data

Width	17.5 mm / 0.689 inches
Height	77.6 mm / 3.055 inches

### Mechanical data

Mounting type	DIN-35 rail Screw mount
Suitable	for 2-, 3- and 5-conductor 221 Series Splicing Connectors (4 mm <sup>2</sup> )

### Material data

Note (material data)	<a href="#">Information on material specifications can be found here</a>
Color	orange
Material group	I
Insulation material	Polyamide (PA66)
Flammability class per UL94	V0
Fire load	0.294 MJ
Weight	9.8 g

### Commercial data

eCl@ss 10.0	27-14-11-92
eCl@ss 9.0	27-14-11-92
ETIM 8.0	EC002848
ETIM 7.0	EC002848
PU (SPU)	50 (10) pcs
Packaging type	Box
Country of origin	CN
GTIN	4066966466492
Customs tariff number	39269097900

### Environmental Product Compliance

RoHS Compliance Status Compliant, No Exemption

### Downloads

#### Environmental Product Compliance

Compliance Search	
Environmental Product Compliance 221-500	<a href="#">↓</a>

### Documentation

Bid Text			
221-500	19.02.2019	xml 2.72 KB	<a href="#">↓</a>
221-500	23.01.2019	docx 14.58 KB	<a href="#">↓</a>
ausschreiben.de 221-500			<a href="#">↓</a>

### CAD/CAE-Data

CAD data
2D/3D Models 221-500

CAE data
EPLAN Data Portal 221-500
ZUKEN Portal 221-500

### 1 Compatible Products

#### 1.1 Optional Accessories

##### 1.1.1 Marking

##### 1.1.1.1 Marking strip



**Item No.: 210-833**  
 Marking strips; 25 m on roll; 6 mm wide;  
 plain; Self-adhesive; white

## 1.1.2 Mounting adapter

### 1.1.2.1 Mounting accessories



**Item No.: 222-510**

Angled DIN-rail adapter; in combination with mounting carrier; 221-500 or 222-500; for DIN-35 rail mounting; gray

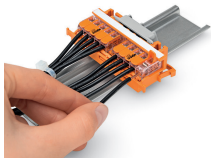


**Item No.: 222-505**

Strain relief plate; for mounting carrier; 221 or 222 Series, can be snapped

## Installation Notes

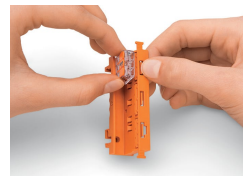
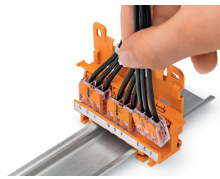
### Conductor termination



**CAGE CLAMP® connection:**

Conductor termination with connectors fitted in a mounting carrier

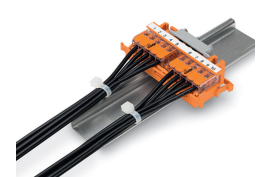
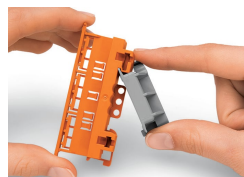
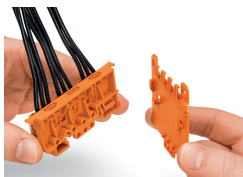
Removing a conductor.



Inserting a connector into the mounting carrier.

Inserting a connector into the mounting carrier.

Removing a connector from the mounting carrier.

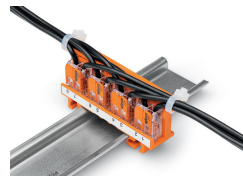
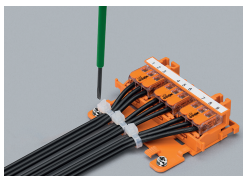


Securing a strain relief plate (222-505) to the mounting carrier.

Snapping the angled DIN-rail adapter (222-510) onto the mounting carrier.

Horizontal mounting on DIN-35 rail using an angled DIN-rail adapter

Horizontal mounting on DIN-35 rail using an angled DIN-rail adapter

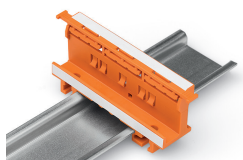


Horizontal screw mounting with strain relief plate on a flat surface

Vertical mounting with strain relief plate on DIN-35 rail

Strain relief via cable ties on the mounting carrier (transverse to the connectors' wiring direction) – clamping units labeled via marking strips (210-334)

Vertical screw mounting with strain relief plate on a flat surface



Mounting carrier on a DIN-35 rail

Testing



Testing connectors via test slots on top of the carrier.